


APPLICATION FOR DEVELOPMENT APPROVAL

Owner Details		
Name: Co-operative Bulk Handling Ltd		ABN (if applicable): 29 256 604 947
Address: Level 6 No. 240 St Georges Terrace, Perth, WA		Postcode: 6000
Phone: 08 9216 6061 (work): (home): (mobile):	Fax:	E-mail: timothy.roberts@cbh.com.au
Contact person for correspondence: Timothy Roberts		
Signature: 		Date: 24 June 2025
Signature:		Date:
<i>The signature of the owner(s) is required on all applications. This application will not proceed without that signature. For the purposes of signing this application an owner includes the persons referred to in the Planning and Development (Local Planning Schemes) Regulations 2015 Schedule 2 clause 62(2)</i>		

Applicant Details (if different from owner)		
Name: As Above.		
Address:		Postcode:
Phone: (work): (home): (mobile):	Fax:	E-mail:
Contact person for correspondence:		
The information and plans provided with this application may be made available by the local government for viewing in connection with the application. <input checked="" type="checkbox"/> Yes <input type="checkbox"/> No		
Signature:		Date:

Property Details		
Lot No: 25	House/Street No:	Location No:
Diagram or Plan No: 425195	Certificate of Title Vol. No: 4055	Folio: 169
Title encumbrances (e.g. easements, restrictive covenants):		
Street name: Irvine Road		Suburb: Dowerin
Nearest street intersection: Goomalling - Wyalkatchem Road		

Proposed Development

Nature of development: (Please attach if insufficient space)

Storage additions to existing Grain Handling & Storage Facility

Is an exemption from development claimed for part of the development? ☐ Yes ☒ No

If yes, is the exemption for the following:

Description of proposed works and/or land use: (Please attach if insufficient space)

2 x 1.8m high x 230m long x 35m wide with 30,130 tonne capacity open storage bulkheads with associated vehicular access and general drainage (open drains, culverts, drainage basins) to support impervious works.

Description of exemption claimed (if relevant): (Please attach if insufficient space)

NA

Nature of any existing buildings and/or land use: (Please attach if insufficient space)

Grain Handling & Storage Facility

Approximate cost of proposed development: \$1,000,000

Estimated time of completion: October 2025

OFFICE USE ONLY

Acceptance Officer's initials:

Date received:

Local government reference no:

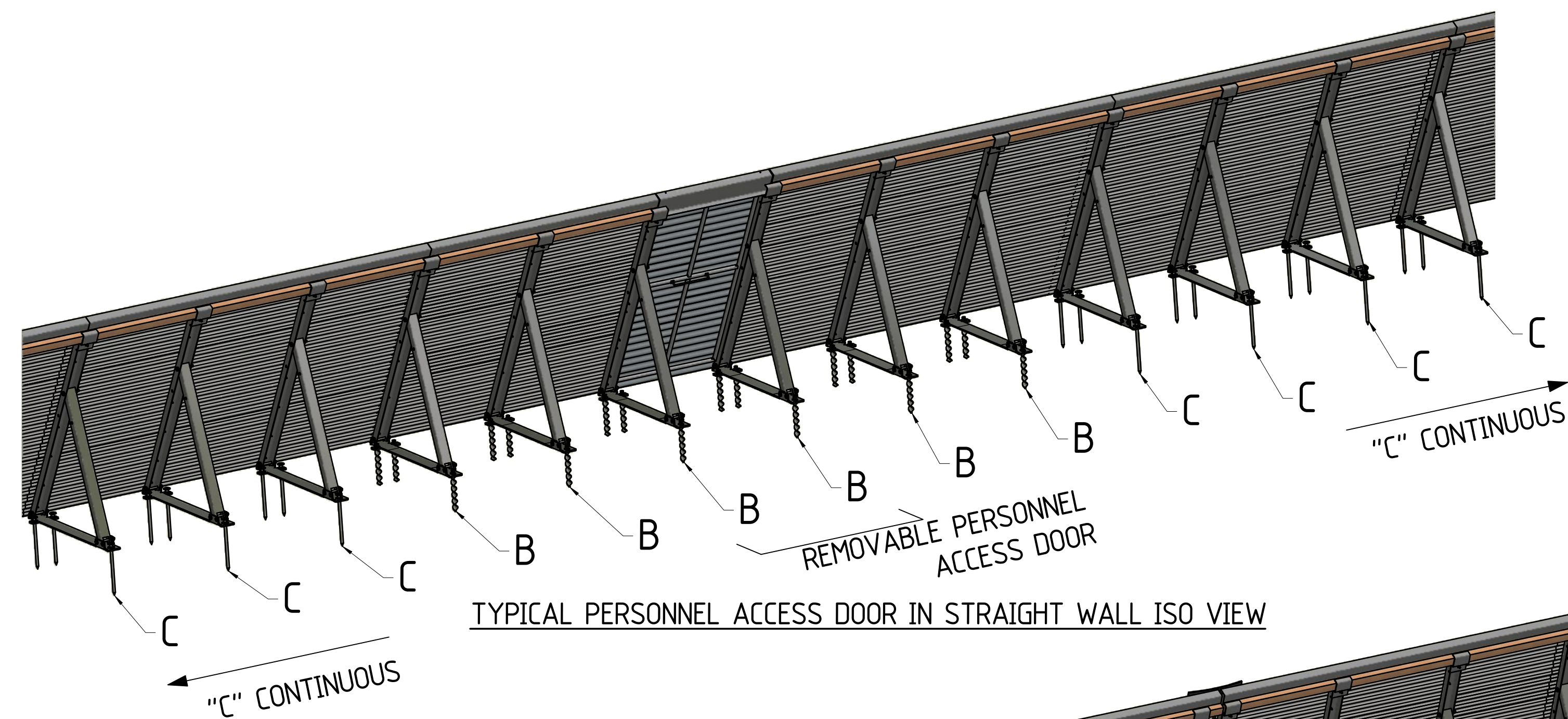


- | PARTS LIST (PER UNIT) | | | | | | | | | |
|-----------------------|--|-------|--------|------------|-------------------------|-------------|----------|---------|-----------|
| ITEM No | DESCRIPTION | WIDTH | LENGTH | QTY | CBH OR SUPPLIER PART No | PROCESS | SAP Code | MASS Kg | TO DETAIL |
| 1 | FRONT END LOADER ACCESS GATE | | | REFER NOTE | S119-ENG-ST-ASY-0034 | FIELD FIT | N/A | 184.4 | Yes |
| 2 | PERSONNEL ACCESS DOOR | | | REFER NOTE | S119-ENG-ST-ASY-0017 | FITTING | N/A | 17.1 | Yes |
| 3 | STRAIGHT PIN STRUT ASSEMBLY | | | REFER NOTE | S119-ENG-ST-ASY-0004 | FITTING | N/A | 36.4 | Yes |
| 4 | SPIRAL PIN STRUT ASSEMBLY | | | REFER NOTE | S119-ENG-ST-ASY-0005 | FITTING | N/A | 36.2 | Yes |
| 5 | CUSTOM ORB ZINC ALUME 0.42mm BMT 550 MPa MIN. (YIELD) | 762 | 3200 | REFER NOTE | S119-ENG-ST-PRT-0010 | FITTING | DREQ | 1.3 | No |
| 6 | DIA 20 STRAIGHT PIN ANCHOR | | 420 | REFER NOTE | S-014-A0000 | FIELD KIT | DREQ | 1.1 | Yes |
| 7 | SPIRAL PIN ANCHOR | | 300 | REFER NOTE | S119-ENG-ST-DER-0052 | FITTING | DREQ | 0.8 | Yes |
| 8 | Z CAPPING 1.6PL PGI | 300 | 3000 | REFER NOTE | S119-ENG-ST-PRT-0011 | FAB SHEET | 108015 | 11.4 | Yes |
| 9 | TIMBER SAWN KARRI STRUC3 75mmx50mmx3m | 75 | 3000 | REFER NOTE | S119-ENG-ST-PRT-0014 | FITTING | 108594 | 6.2 | No |
| 10 | TARP CLAMP 6PL | 130 | 257 | REFER NOTE | S119-ENG-ST-PRT-0012 | FAB PROFILE | 107901 | 1.6 | Yes |
| 11 | FUMIGATION TEE PIECE | | | REFER NOTE | S119-ENG-ME-DER-0001 | FITTING | N/A | | Yes |
| 12 | RUBBER STRIP 450mm WIDE, 8mm THICK | 450 | 2050 | REFER NOTE | S119-ENG-ST-PRT-0048 | FIELD KIT | DREQ | 6.9 | No |
| 13 | M10 x 120 GALV BOLT GR8.8 (50mm THREAD Min.) | | | REFER NOTE | | FIELD KIT | DREQ | 0.1 | No |
| 14 | M10 GALV. NUT | | | REFER NOTE | | FIELD KIT | DREQ | 0.0 | No |
| 15 | M10 GALV FW | | | REFER NOTE | | FIELD KIT | DREQ | 0.0 | No |
| 16 | METAL TEK SCREW, HEX HEAD, 14g-20x22mm, CLASS 4, WITH SEAL | | | REFER NOTE | | FIELD KIT | DREQ | 0.0 | No |
| 17 | METAL TEK SCREW, HEX HEAD, 14g-20x45mm, CLASS 4, WITH SEAL | | | REFER NOTE | | FIELD KIT | DREQ | | No |
| 18 | NOVALAST LTM 151 | | | REFER NOTE | | FIELD KIT | DREQ | | No |
| 19 | BOSTIK SEAL AND FLEX 1 | | | REFER NOTE | | FIELD KIT | DREQ | | No |

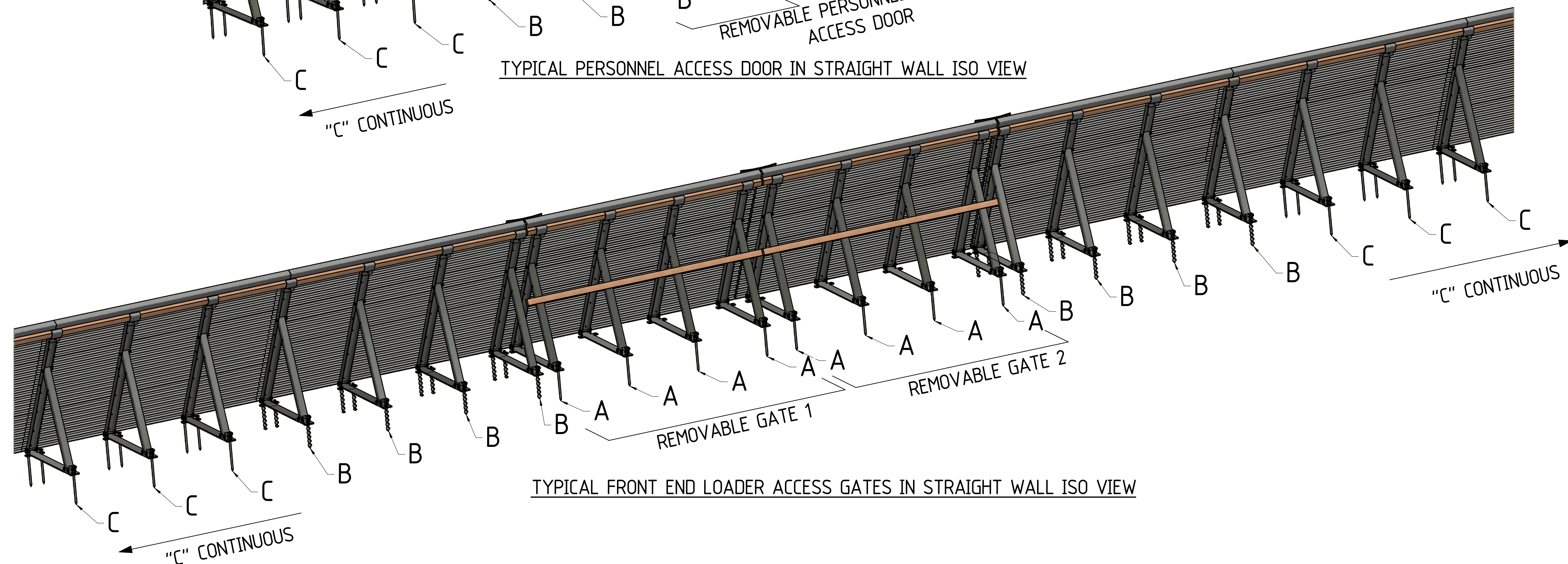
REFER PROJECT SPECIFIC SITE LAYOUT DRAWING FOR TOTAL OBH LENGTH, MEASURED FROM OUTER PIN TO OUTER PIN $\pm 50\text{mm}$



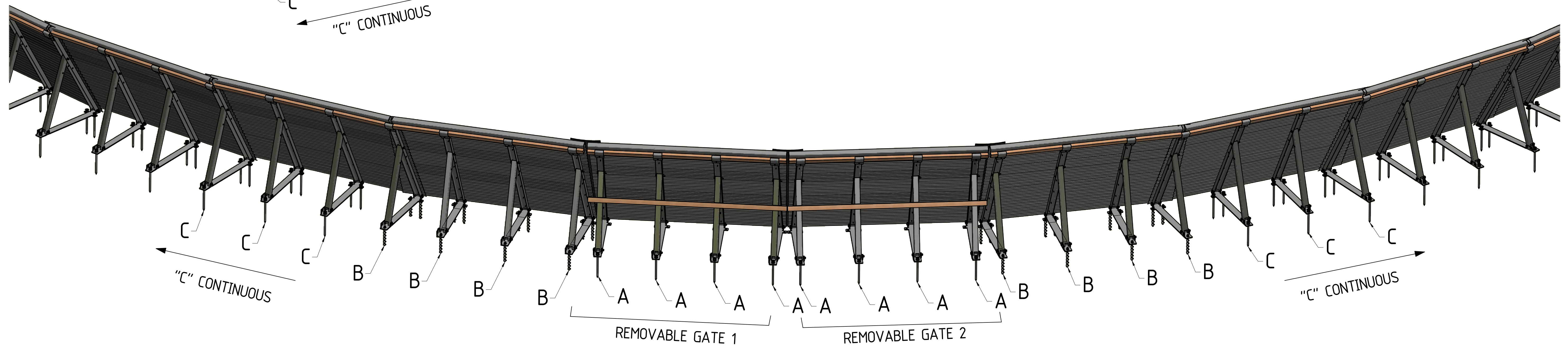
																		DRAWN	SCR	10/06/2020	DRAWING TITLE 1.8m OPEN BULK HEAD GENERAL ARRANGEMENT OVERALL LAYOUT	SITE	VARIOUS	SIZE	A1		
																		CHECKED	LS	10/06/2020		PROJECT					
																		ENGINEER	BC	11/06/2020		STANDARD					
																		APPROVED	NH	11/06/2020		DRAWING No	S119-ENG-ST-DGA-0003	SHEET	1 OF 9	REV.	0
REF	DRG No.	REFERENCE DRAWING TITLE	REV	DATE	REVISIONS	BY	CHK	APP	REV	DATE	REVISIONS	BY	CHK	APP	REV	DATE	COPIED FROM S-119, ISSUED FOR CONSTRUCTION	SCR	LS	NH							



TYPICAL PERSONNEL ACCESS DOOR IN STRAIGHT WALL ISO VIEW

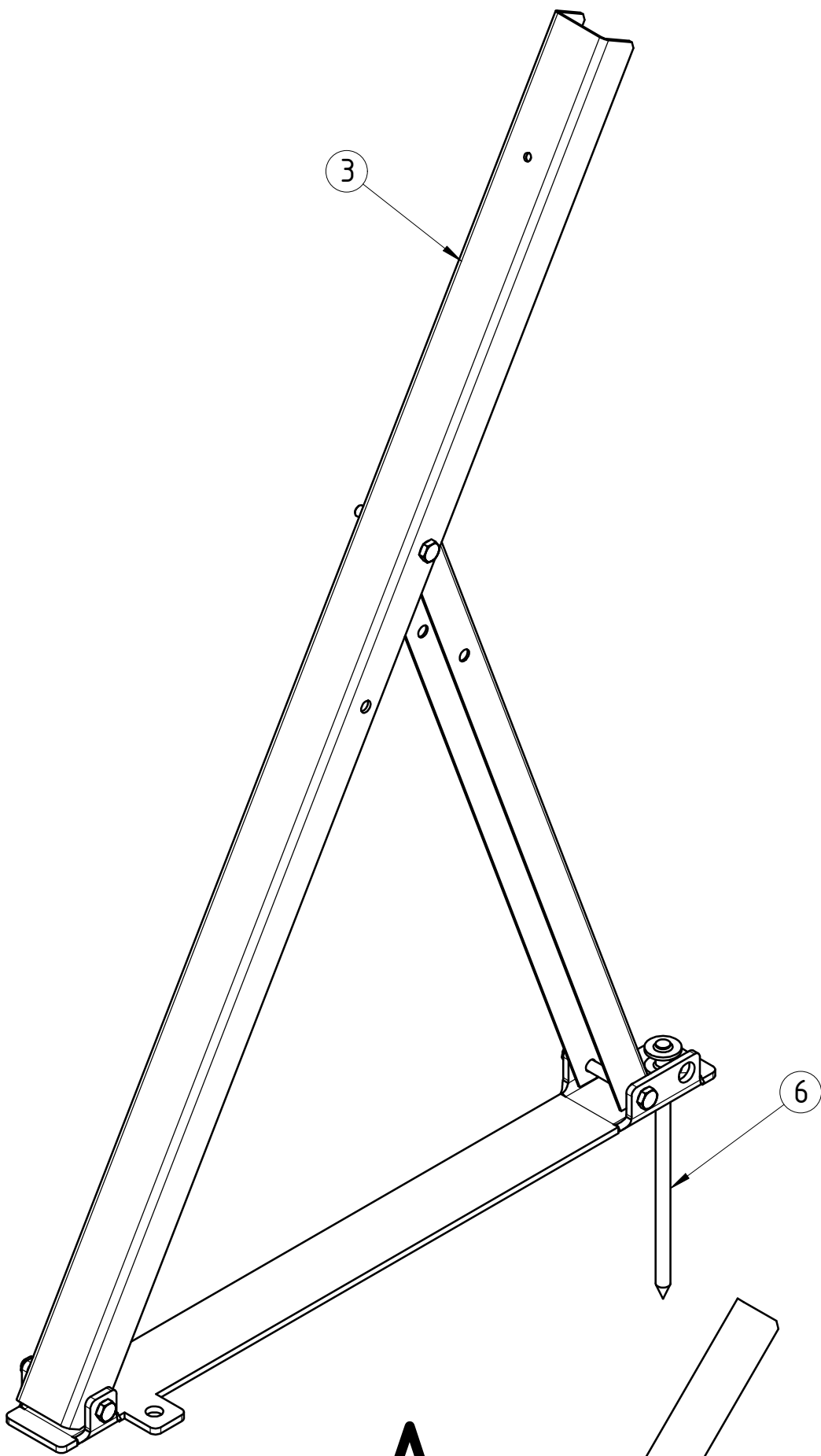
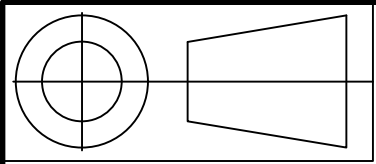


TYPICAL FRONT END LOADER ACCESS GATES IN STRAIGHT WALL ISO VIEW



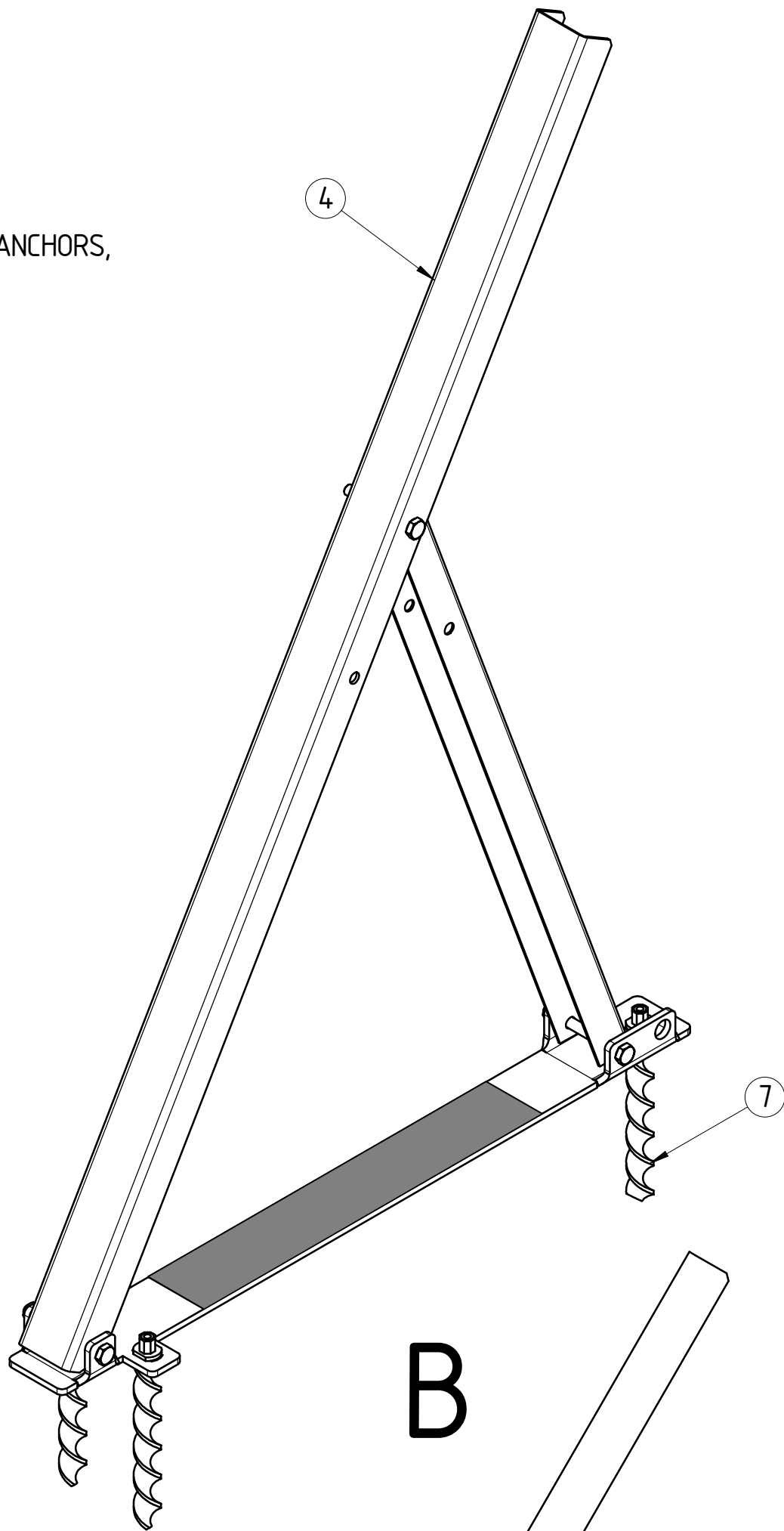
TYPICAL FRONT END LOADER ACCESS GATES IN CURVED WALL ISO VIEW

		SIZE A1
SHEET 2 OF 9		REV. 0

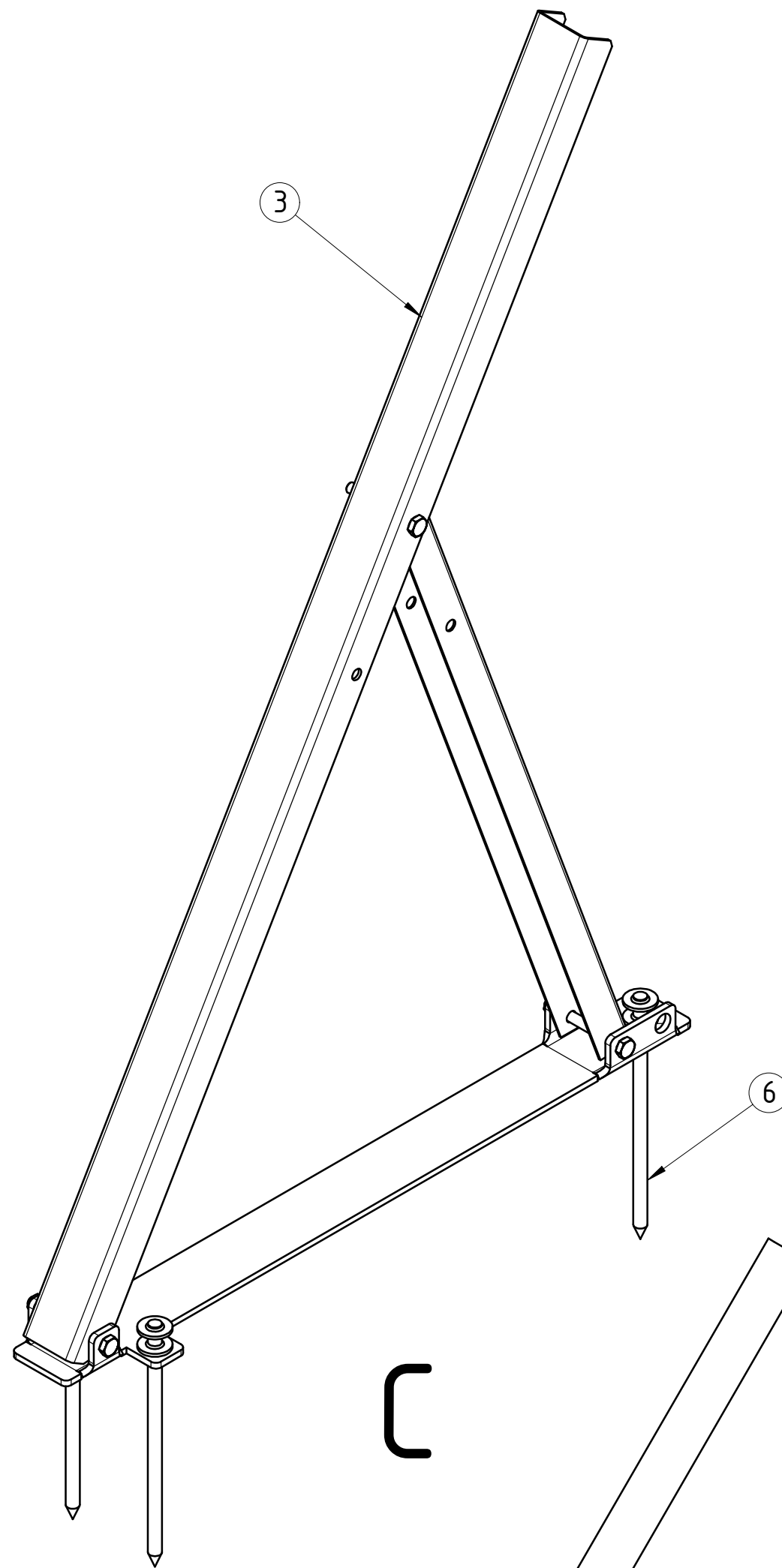


A

NOTES:
REMOVAL TOOL REQUIRED FOR SPIRAFIX ANCHORS,
M22 SPANNER/SOCKET,
HANDLE LENGTH TO SUIT CONDITIONS.



B



C

ARRANGEMENT 'A' NOTES:

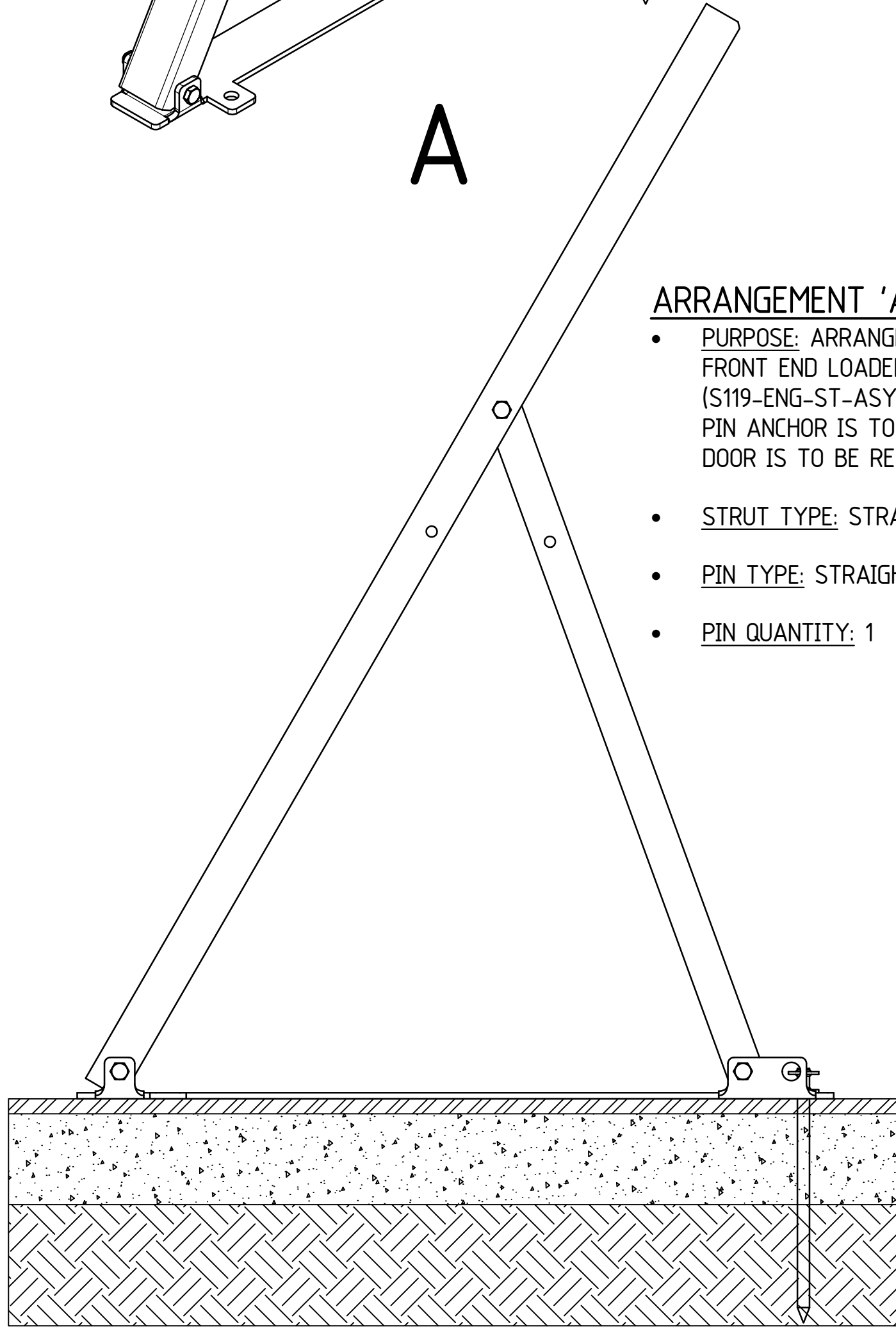
- PURPOSE:** ARRANGEMENT 'A' IS USED IN THE FRONT END LOADER ACCESS GATE ASSEMBLY (S119-ENG-ST-ASY-0034). ONLY 1 STRAIGHT PIN ANCHOR IS TO BE INSTALLED AS THE DOOR IS TO BE REMOVABLE.
- STRUT TYPE:** STRAIGHT PIN STRUT
- PIN TYPE:** STRAIGHT PIN ANCHOR
- PIN QUANTITY:** 1

ARRANGEMENT 'B' NOTES:

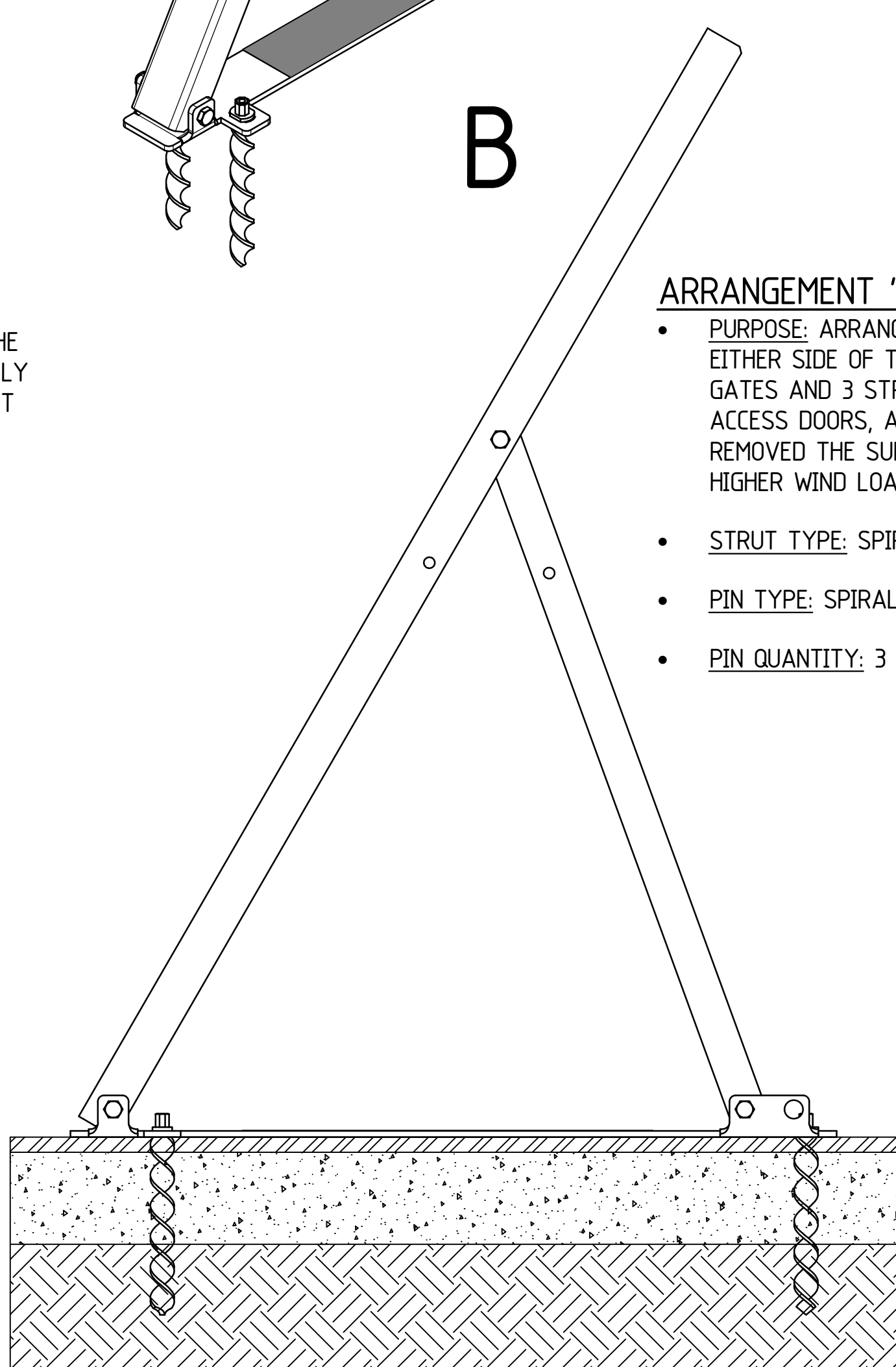
- PURPOSE:** ARRANGEMENT 'B' IS USED 4 STRUTS EITHER SIDE OF THE FRONT END LOADER ACCESS GATES AND 3 STRUTS EITHER SIDE OF PERSONNEL ACCESS DOORS, AS WHEN THE GATES/DOORS ARE REMOVED THE SURROUNDING STRUTS EXPERIENCE HIGHER WIND LOADS.
- STRUT TYPE:** SPIRAL PIN STRUT
- PIN TYPE:** SPIRAL PIN ANCHOR
- PIN QUANTITY:** 3

ARRANGEMENT 'C' NOTES:

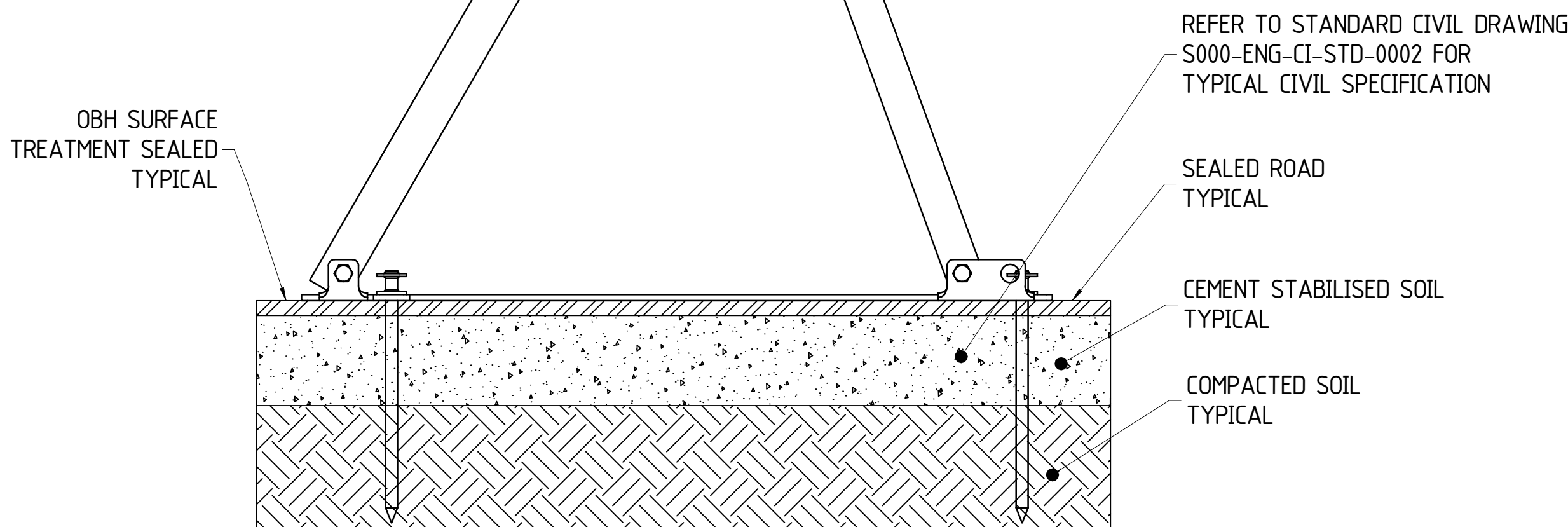
- PURPOSE:** ARRANGEMENT 'C' IS USED IN ALL LOCATIONS, OTHER THAN WHERE ARRANGEMENT 'A' AND 'B' ARE USED
- STRUT TYPE:** STRAIGHT PIN STRUT
- PIN TYPE:** STRAIGHT PIN ANCHOR
- PIN QUANTITY:** 3



A



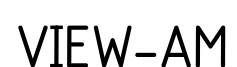
B



C



Z-CAPPING TEK SCREW
SEE IMPORTANT NOTES



TOE DOWN
TOP EDGE OF THE SHEET
TO SIT ABOVE TEK SCREW

5 MIN.
10 MAX.



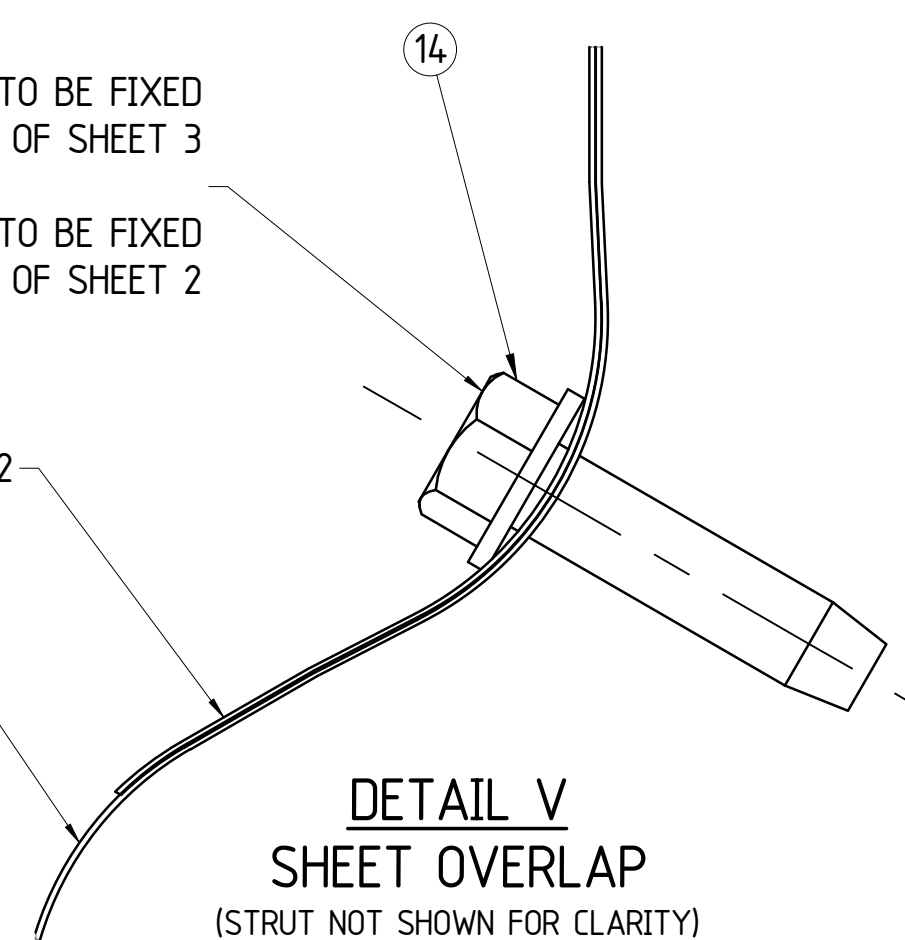
(CLADDING NOT SHOWN FOR CLARITY)

SHEET 2 & 3 OVERLAP - TEK SCREW TO BE FIXED
IN THE FIRST VALLEY OF SHEET 3

SHEET 1 & 2 OVERLAP - TEK SCREW TO BE FIXED
IN THE FIRST VALLEY OF SHEET 2

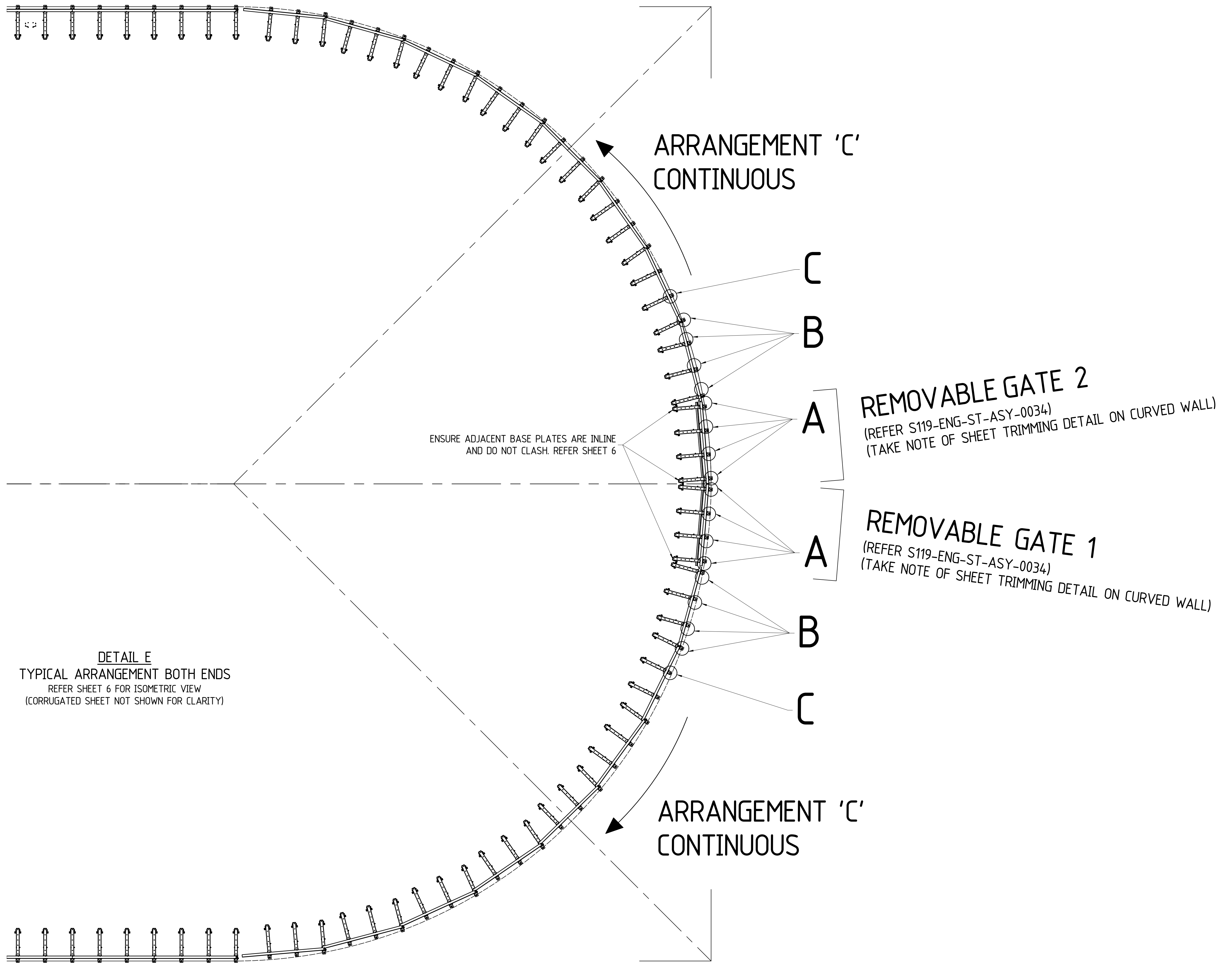
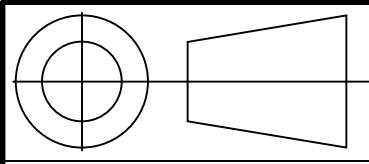
SHEET 3 ON TOP OF SHEET 2-

SHEET 2 ON TOP OF SHEET 1-



DETAIL V
SHEET OVERLAP
TRUT NOT SHOWN FOR CLAR

[illegible]



COPYRIGHT:
THIS DRAWING AND THE
CONTENTS DEPICTED OR WRITTEN
THEREON, WHETHER IN WHOLE OR IN
PART, IS THE EXCLUSIVE INTELLECTUAL
PROPERTY OF CBH GROUP AND
SHOULD NOT BE USED FOR ANY PURPOSE
WITHOUT THE EXPRESS WRITTEN
APPROVAL OF CBH GROUP.



CBH GROUP HEAD OFFICE
LEVEL 6, 240 ST GEORGES TERRACE,
PERTH W.A 6000
PH (08) 9237 9600 FAX (08) 9322 3942

DO NOT SCALE FROM THIS DRAWING

REF	DRG No.	REFERENCE DRAWING TITLE	REV	DATE

REV	DATE	REVISIONS

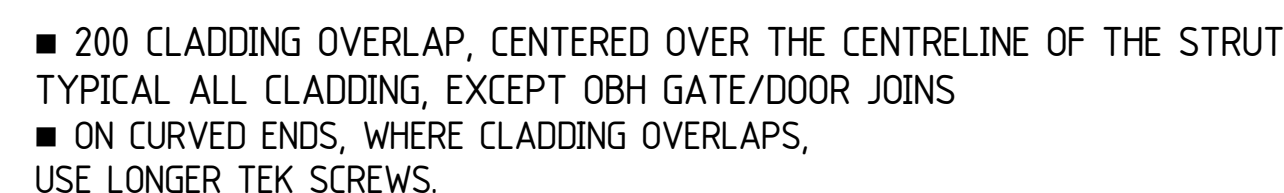
BY	CHK	APP	REV	DATE	REVISIONS

BY	CHK	APP	REV	DATE	REVISIONS

DRAWN	SCR	10/06/2020
CHECKED	LS	10/06/2020
ENGINEER	BC	11/06/2020
APPROVED	NH	11/06/2020

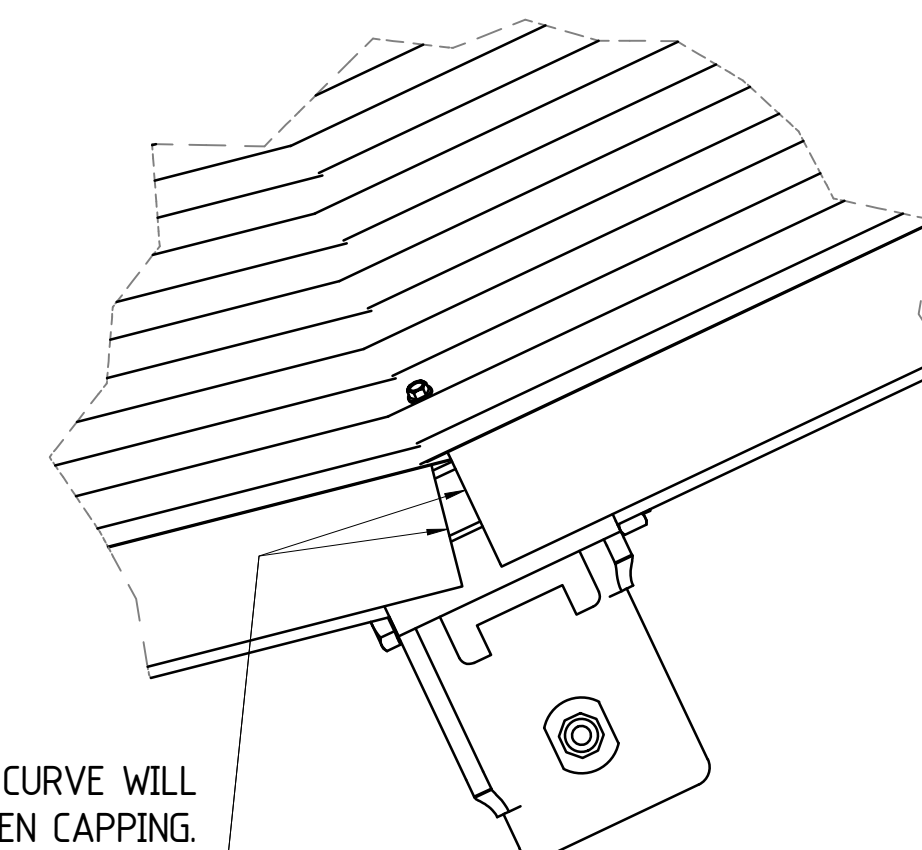
DRAWING TITLE
1.8m OPEN BULK HEAD
GENERAL ARRANGEMENT
TYPICAL CURVED END WALL LAYOUT

SITE VARIOUS	SIZE A1
PROJECT STANDARD	
DRAWING No S119-ENG-ST-DGA-0003	SHEET 5 OF 9
REV. 0	



- ATTACH CONVEYOR BELT OVER JOINTS (SEE BOM FOR BELT DETAILS)
- FIX RUBBER USING 45MM LONG TEK SCREWS, USING 7 TEK SCREWS PER RUBBER STRIP

- 200 CLADDING OVERLAP, CENTERED OVER THE CENTRELINE OF THE STRUT
- TYPICAL ALL CLADDING, EXCEPT OBH GATE/DOOR JOINS
- ON CURVED ENDS, WHERE CLADDING OVERLAPS,
USE LONGER TEK SCREWS.



FITTING THE Z-CAPPING TO A CURVE WILL
CREATE A GAP BETWEEN CAPPING.
MINIMISE GAP AS MUCH AS POSSIBLE TO AVOID THE
SHARP EDGES RIPPING THE OBH TARP.
VERTICAL AND HORIZONTAL MISALIGNMENT
SHOULD BE A MAXIMUM OF 2MM

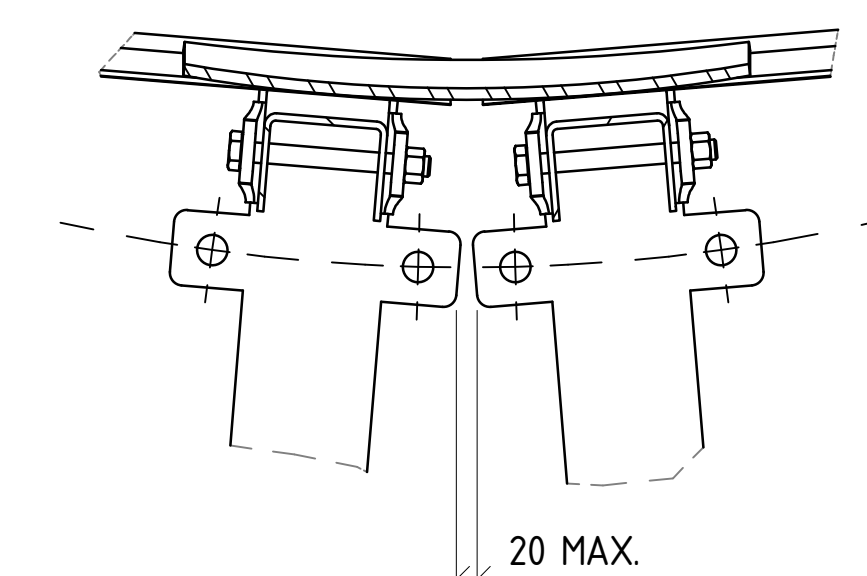
DETAIL AC

CLADDING, Z-CAPPING AND WOOD, ALL TRIMMED
TO SUIT ON BOTH SIDES TO CREATE A BUTT JOIN
BETWEEN THE FIXED WALL AND THE REMOVABLE GATE.
REFER S119-ENG-ST-ASY-0003 FOR CLADDING TRIMMING DETAIL.
MAX ALLOWABLE GAP BETWEEN BUTT
JOINTS IS 20mm - TYPICAL ALL GATES

DETAIL A
FRONT END LOADER ACCESS GATES IN CURVED WALL
TYPICAL BOTH ENDS

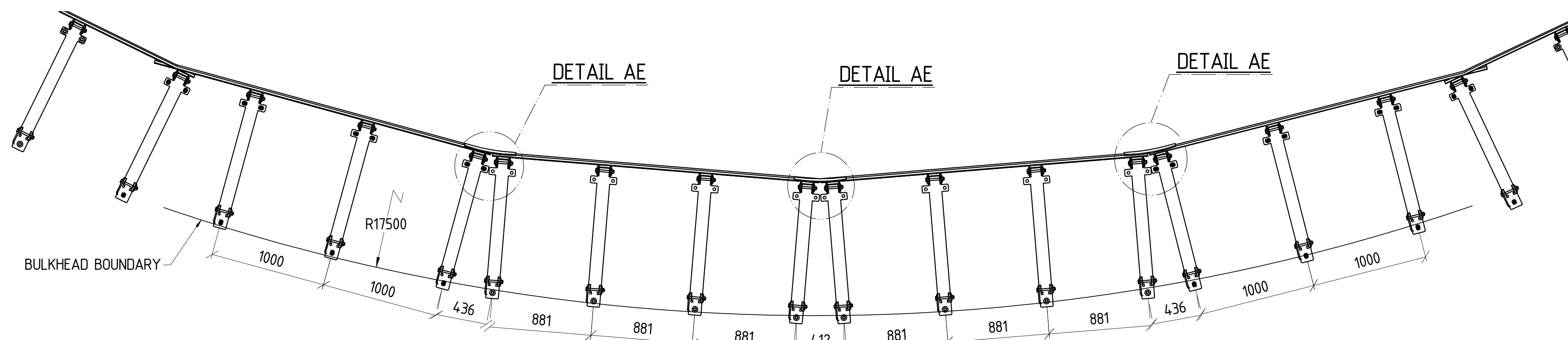
CLADDING, Z-CAPPING AND WOOD, ALL TRIMMED
TO SUIT ON BOTH SIDES TO CREATE A BUTT JOIN
BETWEEN THE FIXED WALL AND THE REMOVABLE GATE.
REFER S119-ENG-ST-ASY-0003 FOR CLADDING TRIMMING DETAIL.
MAX ALLOWABLE GAP BETWEEN BUTT
JOINTS IS 20mm - TYPICAL ALL GATES

20 MAX. GAP
TYPICAL ALL ACCESS WAYS



DETAIL AE
TYPICAL STRUT FOOT ALIGNMENT
AT GATE JOINS
(PINS NOT SHOWN FOR CLARITY)

ELEVATION



SECTION B
FRAMES FOOT PRINT



CBH GROUP HEAD OFFICE
LEVEL 6, 240 ST GEORGES TERRACE,
PERTH W.A 6000
PH (08) 9237 9600 FAX (08) 9322 3942

DO NOT SCALE FROM THIS DRAWING

--	--	--	--	--	--	--	--	--	--	--	--	--	--	--	--	--	--	--	--	--	--	--	--	--	--	--	--	--	--	--	--	--	--	--	--	--	--	--	--	--	--	--	--	--	--	--	--	--	--	--	--	--	--	--	--	--	--	--	--	--	--	--	--	--	--	--	--	--	--	--	--	--	--	--	--	--	--	--	--	--	--	--	--	--	--	--	--	--	--	--	--	--	--	--	--	--	--	--	--	--	--	--	--	--	--	--	--	--	--	--	--	--	--	--	--	--	--	--	--	--	--	--	--	--	--	--	--	--	--	--	--	--	--	--	--	--	--	--	--	--	--	--	--	--	--	--	--	--	--	--	--	--	--	--	--	--	--	--	--	--	--	--	--	--	--	--	--	--	--	--	--	--	--	--	--	--	--	--	--	--	--	--	--	--	--	--	--	--	--	--	--	--	--	--	--	--	--	--	--	--	--	--	--	--	--	--	--	--	--	--	--	--	--	--	--	--	--	--	--	--	--	--	--	--	--	--	--	--	--	--	--	--	--	--	--	--	--	--	--	--	--	--	--	--	--	--	--	--	--	--	--	--	--	--	--	--	--	--	--	--	--	--	--	--	--	--	--	--	--	--	--	--	--	--	--	--	--	--	--	--	--	--	--	--	--	--	--	--	--	--	--	--	--	--	--	--	--	--	--	--	--	--	--	--	--	--	--	--	--	--	--	--	--	--	--	--	--	--	--	--	--	--	--	--	--	--	--	--	--	--	--	--	--	--	--	--	--	--	--	--	--	--	--	--	--	--	--	--	--	--	--	--	--	--	--	--	--	--	--	--	--	--	--	--	--	--	--	--	--	--	--	--	--	--	--	--	--	--	--	--	--	--	--	--	--	--	--	--	--	--	--	--	--	--	--	--	--	--	--	--	--	--	--	--	--	--	--	--	--	--	--	--	--	--	--	--	--	--	--	--	--	--	--	--	--	--	--	--	--	--	--	--	--	--	--	--	--	--	--	--	--	--	--	--	--	--	--	--	--	--	--	--	--	--	--	--	--	--	--	--	--	--	--	--	--	--	--	--	--	--	--	--	--	--	--	--	--	--	--	--	--	--	--	--	--	--	--	--	--	--	--	--	--	--	--	--	--	--	--	--	--	--	--	--	--	--	--	--	--	--	--	--	--	--	--	--	--	--	--	--	--	--	--	--	--	--	--	--	--	--	--	--	--	--	--	--	--	--	--	--	--	--	--	--	--	--	--	--	--	--	--	--	--	--	--	--	--	--	--	--	--	--	--	--	--	--	--	--	--	--	--	--	--	--	--	--	--	--	--	--	--	--	--	--	--	--	--	--	--	--	--	--	--	--	--	--	--	--	--	--	--	--	--	--	--	--	--	--	--	--	--	--	--	--	--	--	--	--	--	--	--	--	--	--	--	--	--	--	--	--	--	--	--	--	--	--	--	--	--	--	--	--	--	--	--	--	--	--	--	--	--	--	--	--	--	--	--	--	--	--	--	--	--	--	--	--	--	--	--	--	--	--	--	--	--	--	--	--	--	--	--	--	--	--	--	--	--	--	--	--	--	--	--	--	--	--	--	--	--	--	--	--	--	--	--	--	--	--	--	--	--	--	--	--	--	--	--	--	--	--	--	--	--	--	--	--	--	--	--	--	--	--	--	--	--	--	--	--	--	--	--	--	--	--	--	--	--	--	--	--	--	--	--	--	--	--	--	--	--	--	--	--	--	--	--	--	--	--	--	--	--	--	--	--	--	--	--	--	--	--	--	--	--	--	--	--	--	--	--	--	--	--	--	--	--	--	--	--	--	--	--	--	--	--	--	--	--	--	--	--	--	--	--	--	--	--	--	--	--	--	--	--	--	--	--	--	--	--	--	--	--	--	--	--	--	--	--	--	--	--	--	--	--	--	--	--	--	--	--	--	--	--	--	--	--	--	--	--	--	--	--	--	--	--	--	--	--	--	--	--	--	--	--	--	--	--	--	--	--	--	--	--	--	--	--	--	--	--	--	--	--	--	--	--	--	--	--	--	--	--	--	--	--	--	--	--	--	--	--	--	--	--	--	--	--	--	--	--	--	--	--	--	--	--	--	--	--	--	--	--	--	--	--	--	--	--	--	--	--	--	--	--	--	--	--	--	--	--	--	--	--	--	--	--	--	--	--	--	--	--	--	--	--	--	--	--	--	--	--	--	--	--	--	--	--	--	--	--	--	--	--	--	--	--	--	--	--	--	--	--	--	--	--	--	--	--	--	--	--	--	--	--	--	--	--	--	--	--	--	--	--	--	--	--	--	--	--	--	--	--	--	--	--	--	--	--	--	--	--	--	--	--	--	--	--	--	--	--	--	--	--	--	--	--	--	--	--	--	--	--	--	--	--	--	--	--	--	--	--	--	--	--	--	--	--	--	--	--	--	--	--	--	--	--	--	--	--	--	--	--	--	--	--	--	--	--	--	--	--	--	--	--	--	--	--	--	--	--	--	--	--	--	--	--	--	--	--	--	--	--	--	--	--	--	--	--	--	--	--	--	--	--	--	--	--	--	--	--	--	--	--	--	--	--	--	--	--	--	--	--	--	--	--	--	--	--	--	--	--	--	--	--	--	--	--	--	--	--	--	--	--	--	--	--	--	--	--	--	--	--	--	--	--	--	--	--	--	--	--	--	--	--	--	--	--	--	--	--	--	--	--	--	--	--	--	--	--	--	--	--	--	--	--	--	--	--	--	--	--	--	--	--	--	--	--	--	--	--	--	--	--	--	--	--	--	--	--	--	--	--	--	--	--	--	--	--	--	--	--	--	--	--	--	--	--	--	--	--	--	--	--	--	--	--	--	--	--	--	--	--	--	--	--	--	--	--	--	--	--	--	--	--	--	--	--	--	--	--	--	--	--	--	--	--	--	--	--	--	--	--	--	--	--	--	--	--	--	--	--	--	--	--	--	--	--	--	--	--	--	--	--	--	--	--	--	--	--	--	--	--	--	--	--	--	--	--	--	--	--	--	--	--	--	--	--	--	--	--	--	--	--	--	--	--	--	--	--	--	--	--	--	--	--	--	--	--	--	--	--	--	--	--	--	--	--

	DRAWN	SCR 10/06/2022
	CHECKED	LS 10/06/2022
	ENGINEER	BC 11/06/2022
P	APPROVED	NH 11/06/2022

20	DRAWING TITLE
20	1.8m OPEN BULK HEAD
20	GENERAL ARRANGEMENT
20	CURVED OBH OPENING DETAIL

SITE

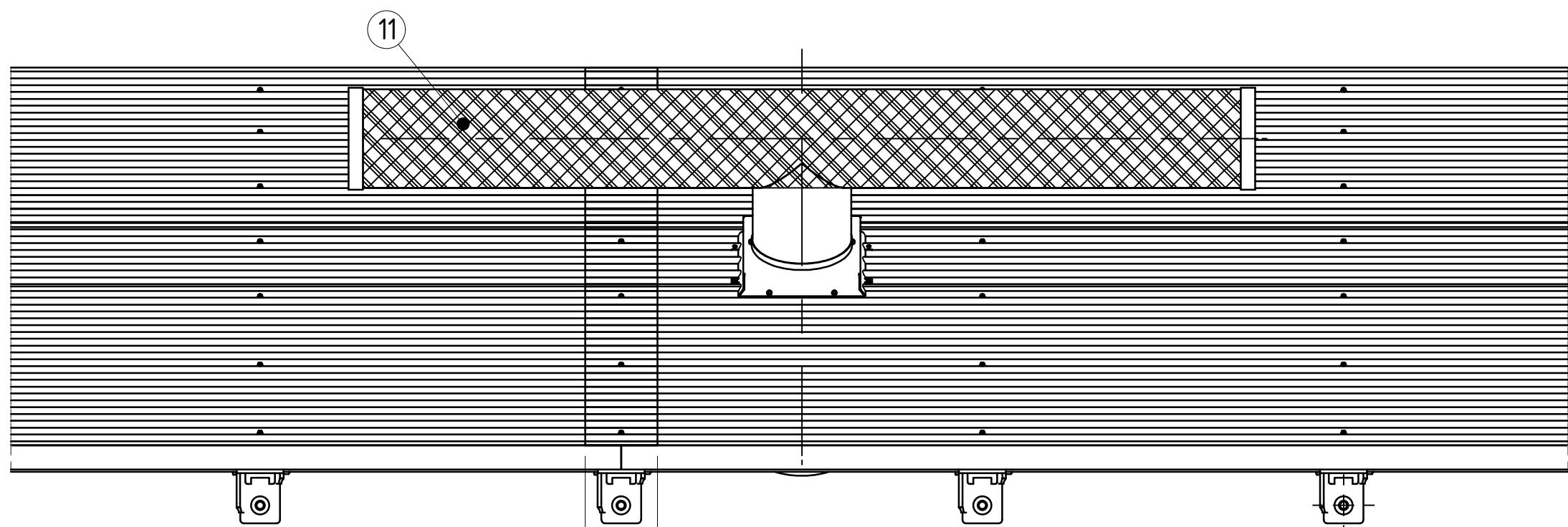
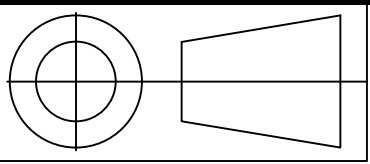
PROJECT
STANDARD

DRAWING No	SHEET	REV
S119-ENG-ST-DGA-0003	6 OF 9	0

SIZE	A
------	---

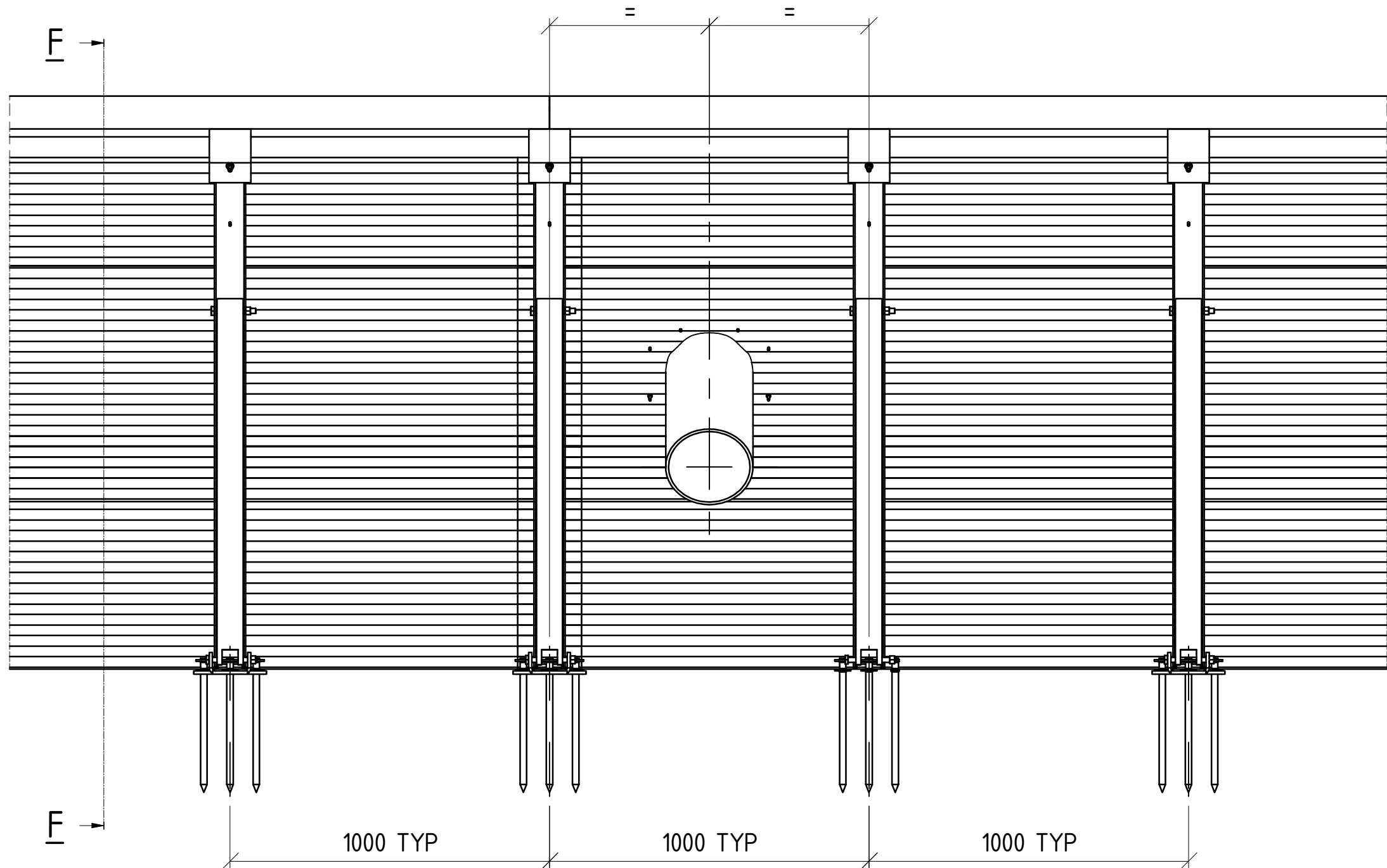
六

REV	0
-----	---

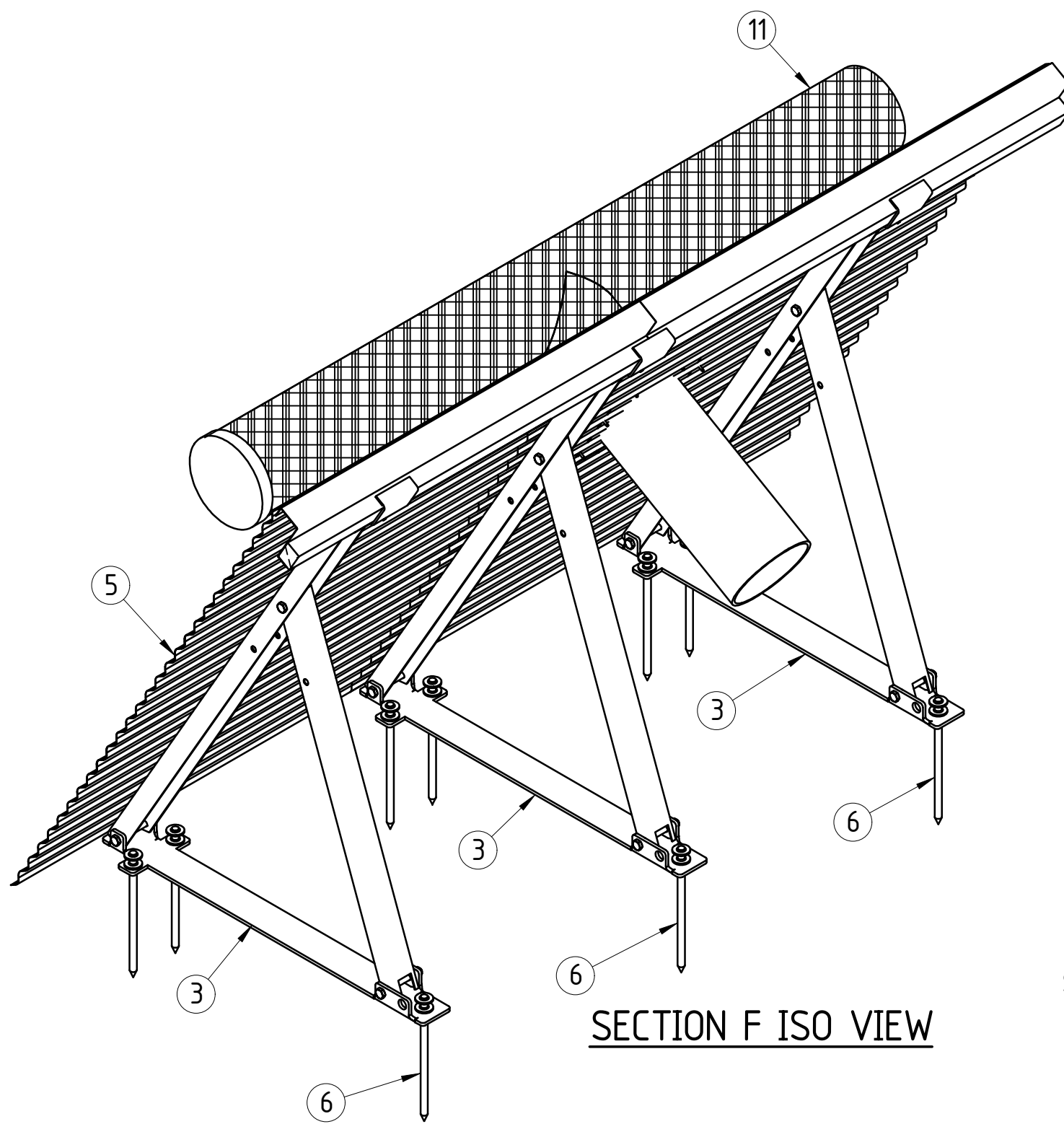


200 CLADDING OVERLAP, CENTERED OVER THE CENTRELINE OF THE STRUT
TYPICAL ALL CLADDING, EXCEPT OBH GATE/DOOR JOINS

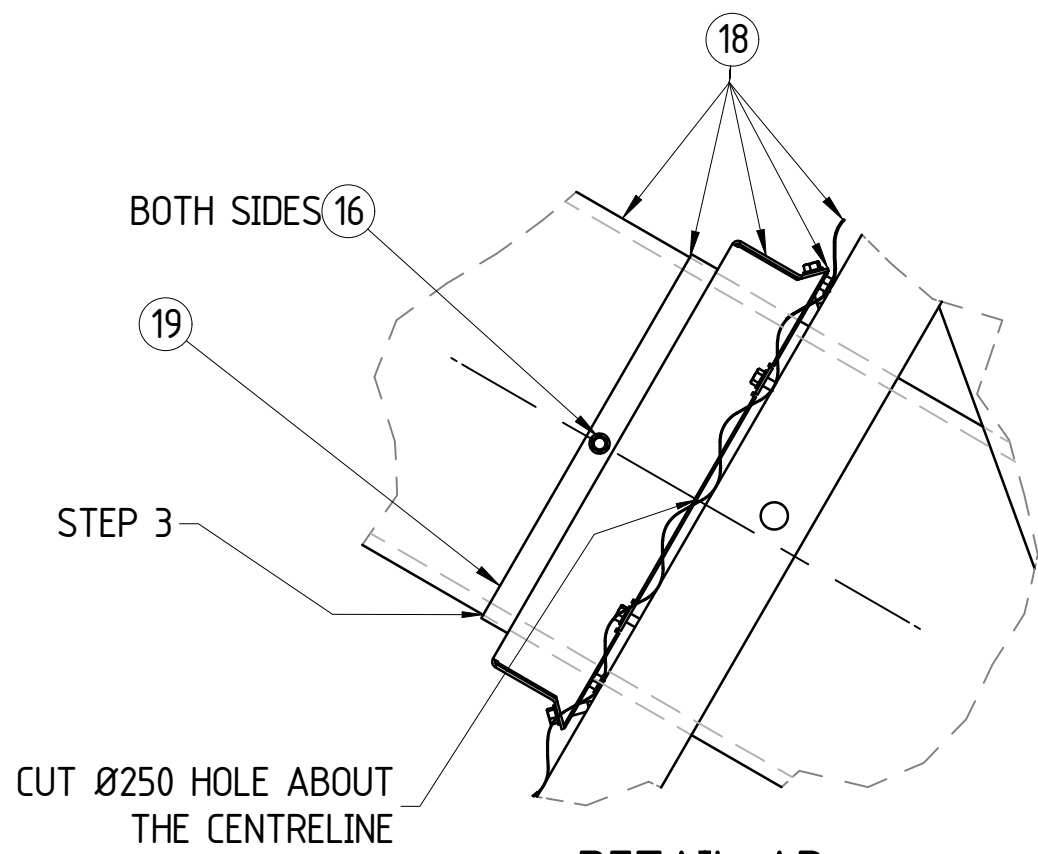
DETAIL B
'T' PIECE INSTALLATION DETAIL



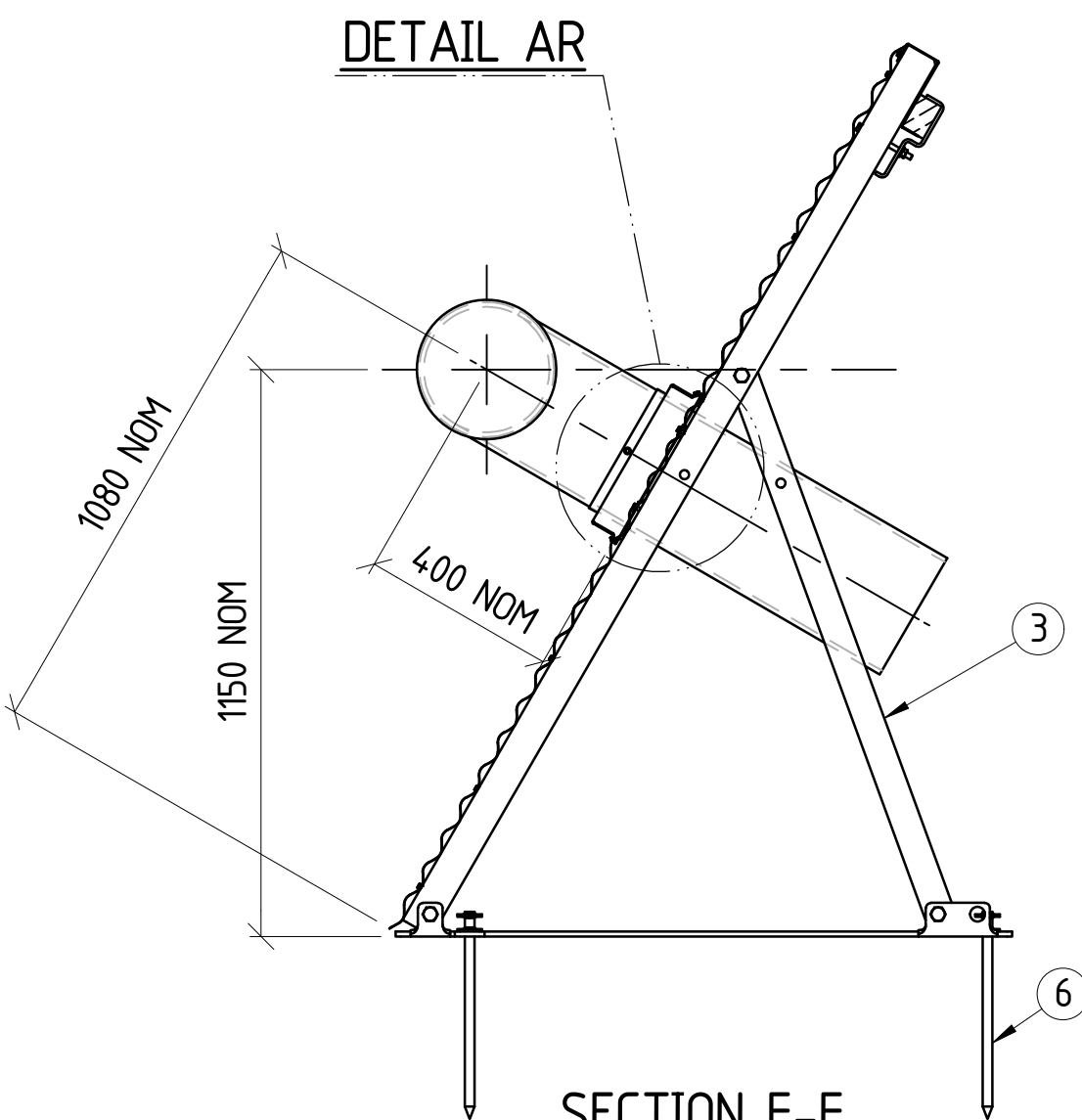
ELEVATION



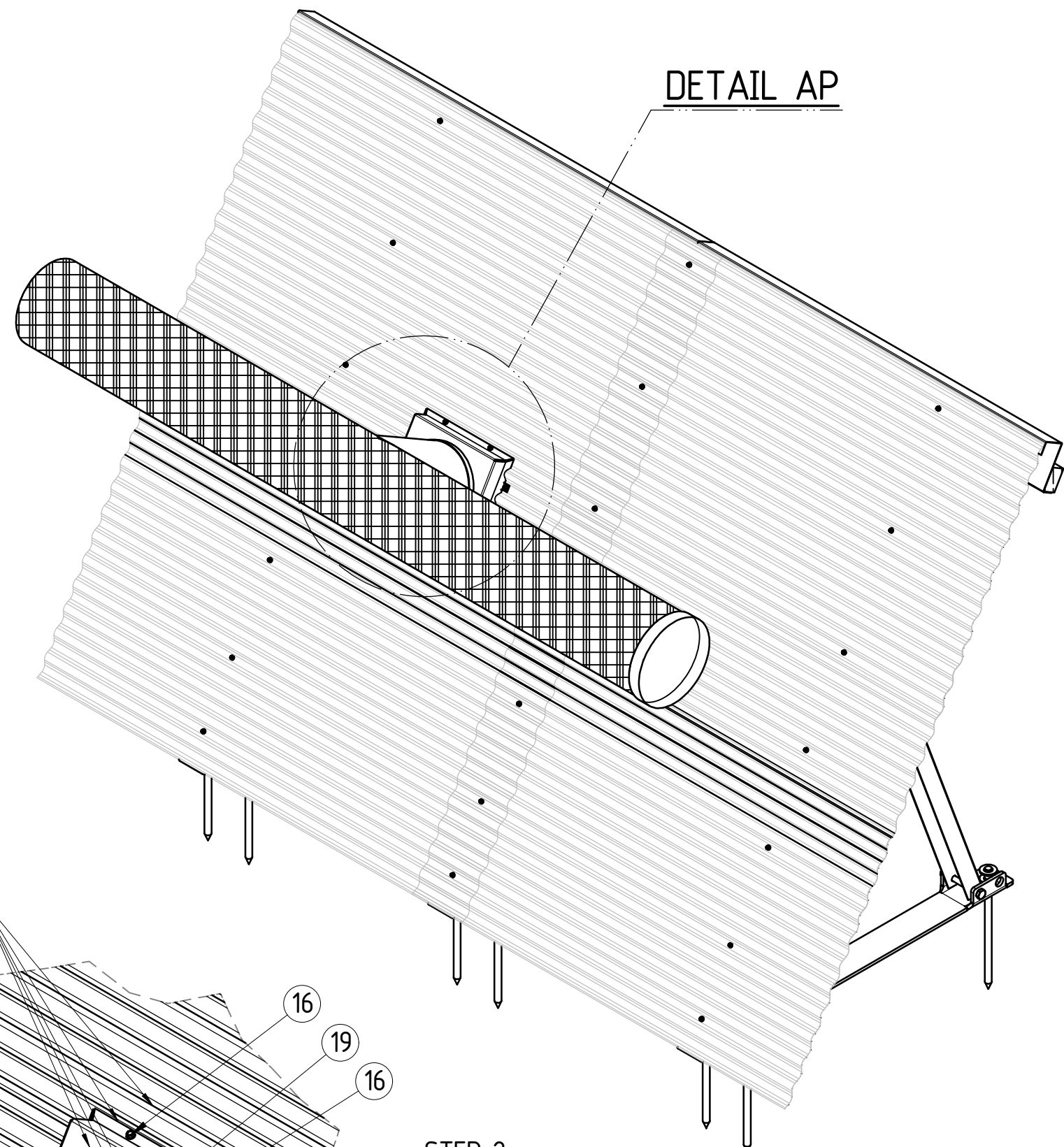
SECTION F ISO VIEW



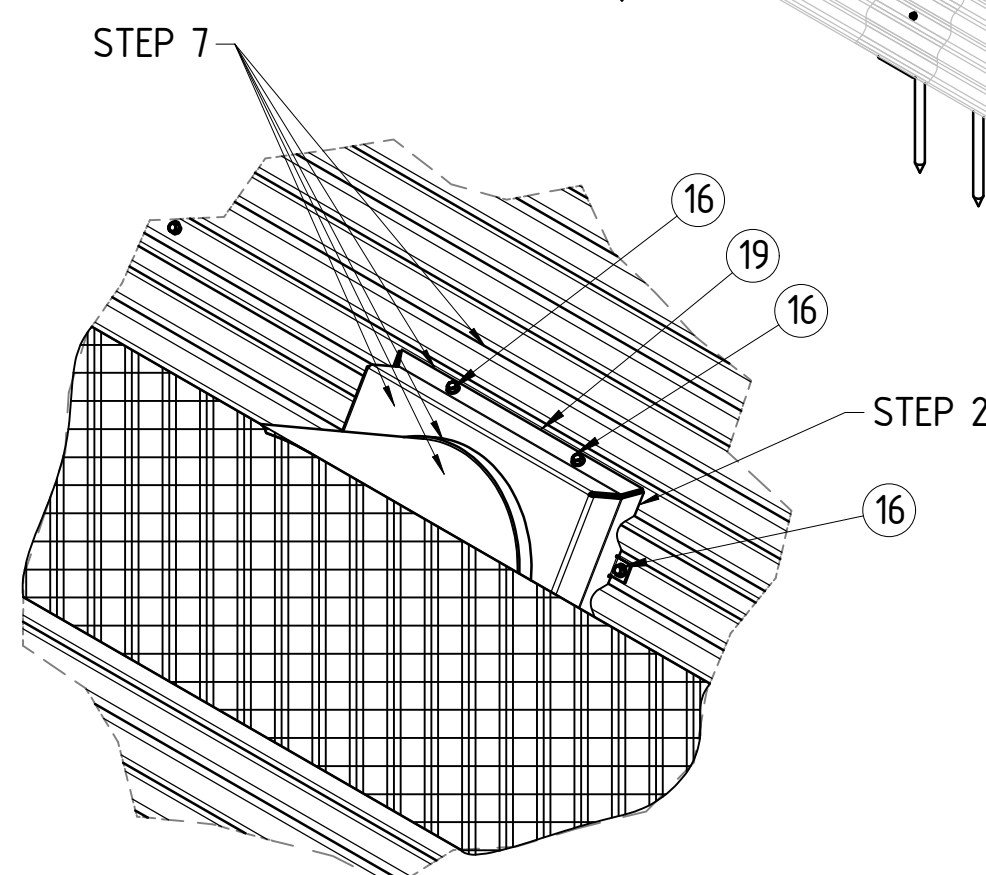
DETAIL AR



SECTION F-F



DETAIL AP



DETAIL AP

BACKGROUND:

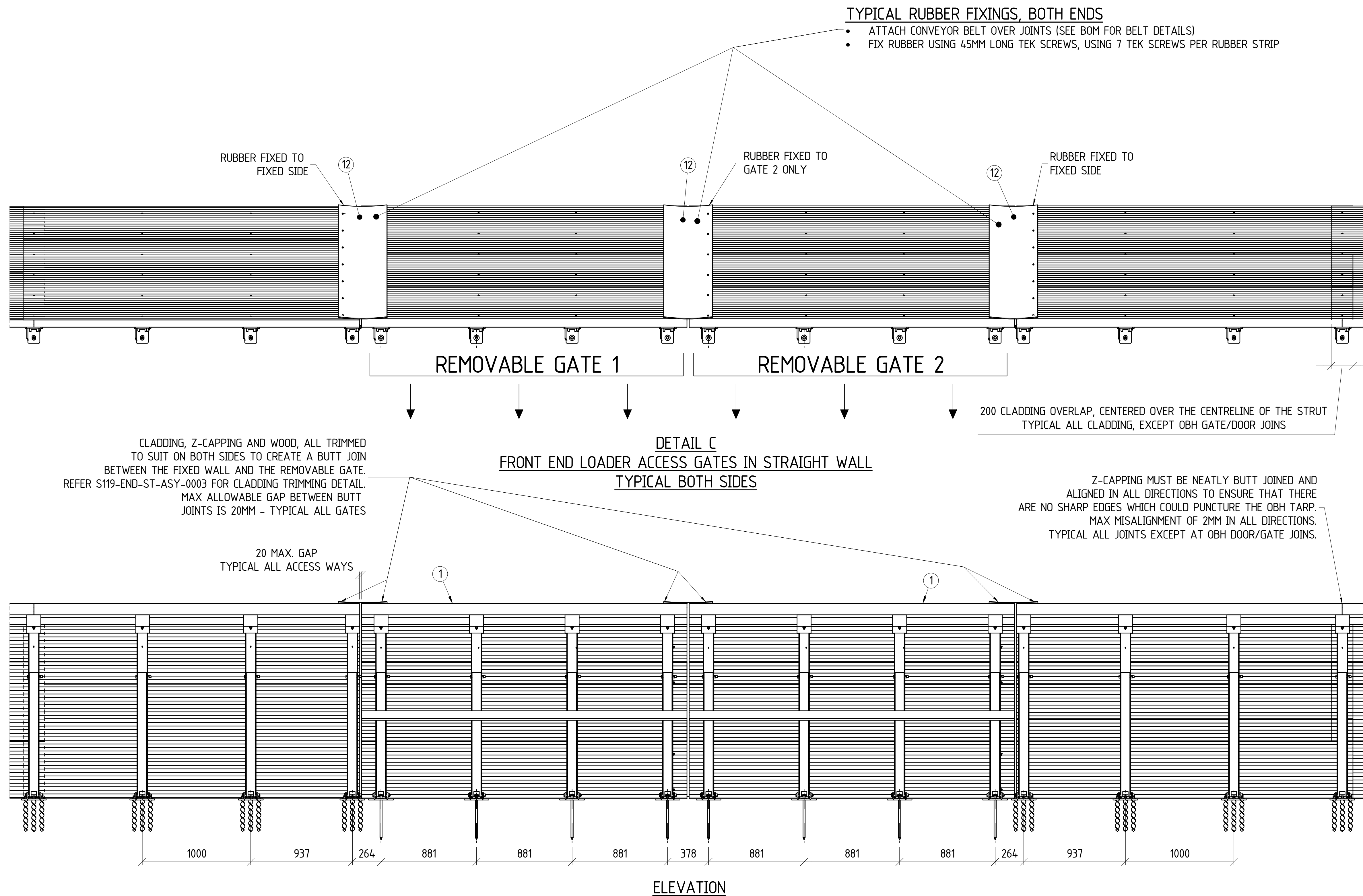
- THE 'T' PIECE IS USED TO PUMP HAZARDOUS FUMIGANT INTO THE STORAGE AFTER IT IS FULLY SEALED. CARE MUST BE TAKEN WHEN INSTALLING THE 'T' PIECE AND APPLYING THE SEALANTS TO ENSURE THE SEAL IS APPLIED TO A HIGH QUALITY.

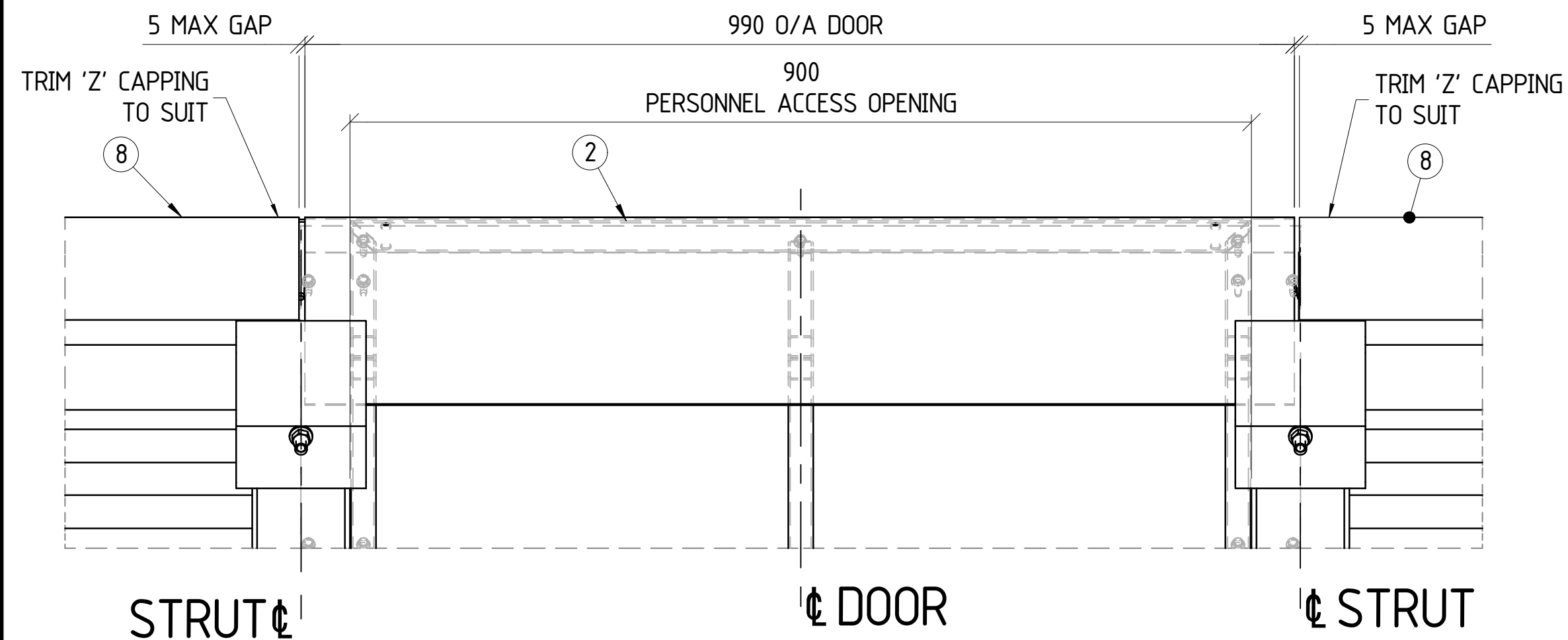
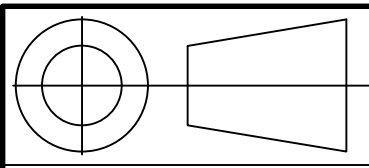
USE THE FOLLOWING QUANTITY'S PER 1 'T'PIECE

- 1 X 600ML SAUSAGE OF BOSTIK SEAL AND FLEX 1
- 1L OF NOVALAST LTM 151

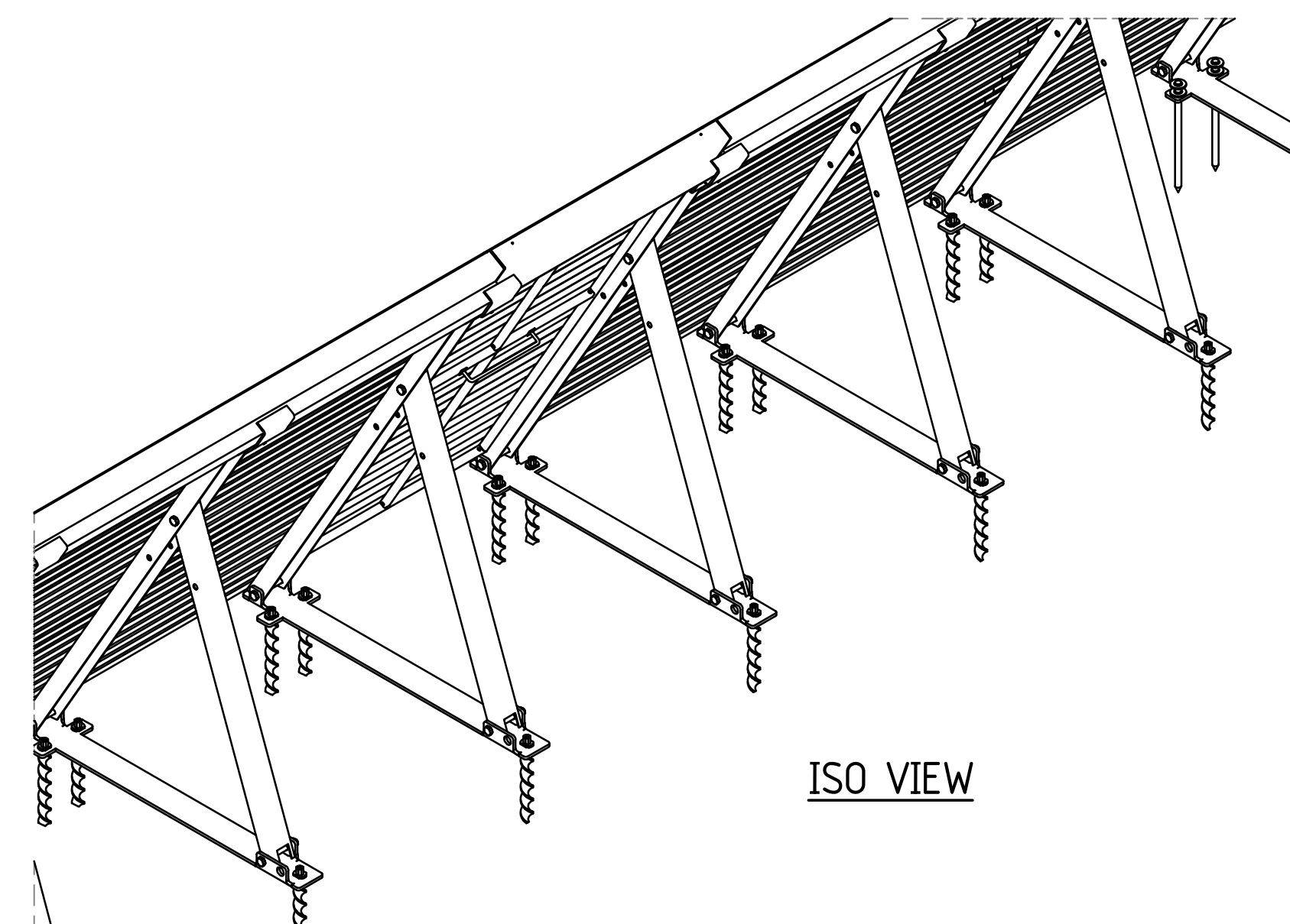
PROCEDURE:

- STEP 1: PREPARE AND CLEAN SURFACES WHERE SEALANTS ARE TO BE APPLIED AS PER MANUFACTURERS SPECIFICATIONS.
- STEP 2: INITIAL COLLAR INSTALL; APPLY A THICK (5-10MM) BEAD OF 'BOSTIK SEAL N FLEX 1' TO ALL EDGES OF THE T-PIECE MOUNTING COLLAR WHICH WILL CONTACT THE CORRUGATED CLADDING. TEK SCREW T-PIECE MOUNT (WITH BOSTIC SEALANT APPLIED) TO THE CLADDING USING 8 TEK SCREWS, EVENLY SPACED AROUND THE T-PIECE MOUNTING COLLAR.
- STEP 3: INSERT T-PIECE INTO THE T-PIECE MOUNTING COLLAR. SECURE THE T-PIECE AT THE LOCATION SHOWN, USING 2 X TEK SCREWS, THROUGH THE MOUNTING COLLAR RING. APPLY A THICK (5-10MM) BEAD OF 'BOSTIK SEAL N FLEX 1' AROUND THE JOIN AND AROUND ANY GAPS, INCLUDING AROUND THE TEK SCREWS. ALSO APPLY A THICK BEAD TO FILL THE GAP BETWEEN THE CLADDING AND THE T-PIECE, ON THE OUTSIDE OF THE BULKHEAD.
- STEP 4: LET SEALANT DRY AS PER MANUFACTURER'S DIRECTIONS.
- STEP 5: APPLY A SECOND THICK (5-10MM) BEAD OF 'BOSTIC SEAL N FLEX 1' AROUND ALL JOINS BETWEEN THE T-PIECE MOUNTING COLLAR, THE T-PIECE AND THE CLADDING.
- STEP 6: LET SEALANT DRY AS PER MANUFACTURER'S DIRECTIONS.
- STEP 7: PAINT THE ENTIRE T-PIECE MOUNTING COLLAR AND 150MM OF CLADDING AROUND THE COLLAR. ALSO PAINT 150MM OF THE T-PIECE, PAST THE COLLAR RING JOIN. PAINT WITH 'NOVALAST 151 LTM'
- STEP 8: LET SEALANT DRY AS PER MANUFACTURER'S DIRECTIONS.

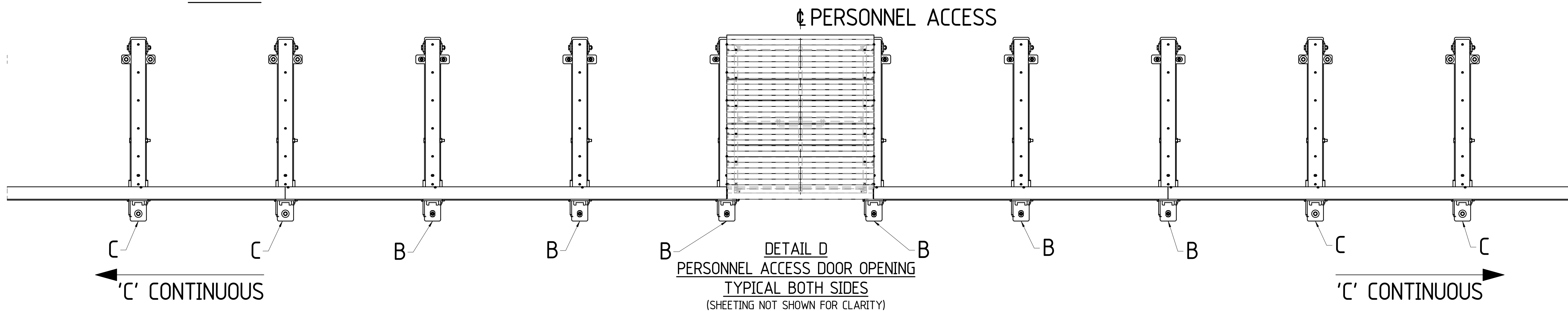




DETAIL AK



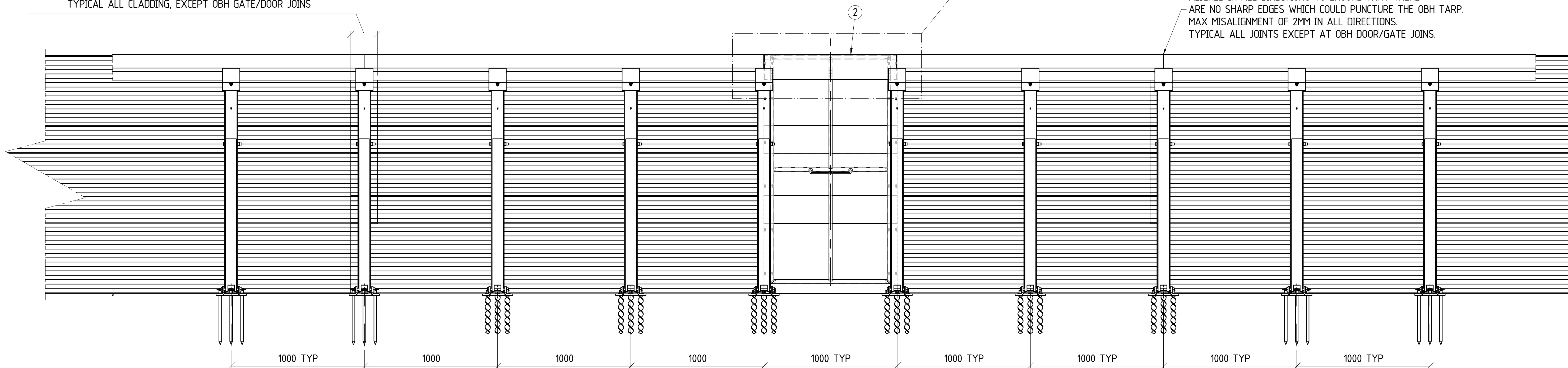
ISO VIEW



200 CLADDING OVERLAP, CENTERED OVER THE CENTRELINE OF THE STRUT
TYPICAL ALL CLADDING, EXCEPT OBH GATE/DOOR JOINS

DETAIL AK

Z-CAPPING MUST BE NEATLY BUTT JOINED AND
ALIGNED IN ALL DIRECTIONS TO ENSURE THAT THERE
ARE NO SHARP EDGES WHICH COULD PUNCTURE THE OBH TARP.
MAX MISALIGNMENT OF 2MM IN ALL DIRECTIONS.
TYPICAL ALL JOINTS EXCEPT AT OBH DOOR/GATE JOINS.



ELEVATION

COPYRIGHT:
THIS DRAWING AND THE
CONTENTS DEPICTED OR WRITTEN
THEREON, WHETHER IN WHOLE OR IN
PART, IS THE EXCLUSIVE INTELLECTUAL
PROPERTY OF CBH GROUP AND
SHOULD NOT BE USED FOR ANY PURPOSE
WITHOUT THE EXPRESS WRITTEN
APPROVAL OF CBH GROUP.



CBH GROUP HEAD OFFICE
LEVEL 6, 240 ST GEORGES TERRACE,
PERTH W.A 6000
PH (08) 9237 9600 FAX (08) 9322 3942

REF DRG No.	REFERENCE DRAWING TITLE	REV	DATE

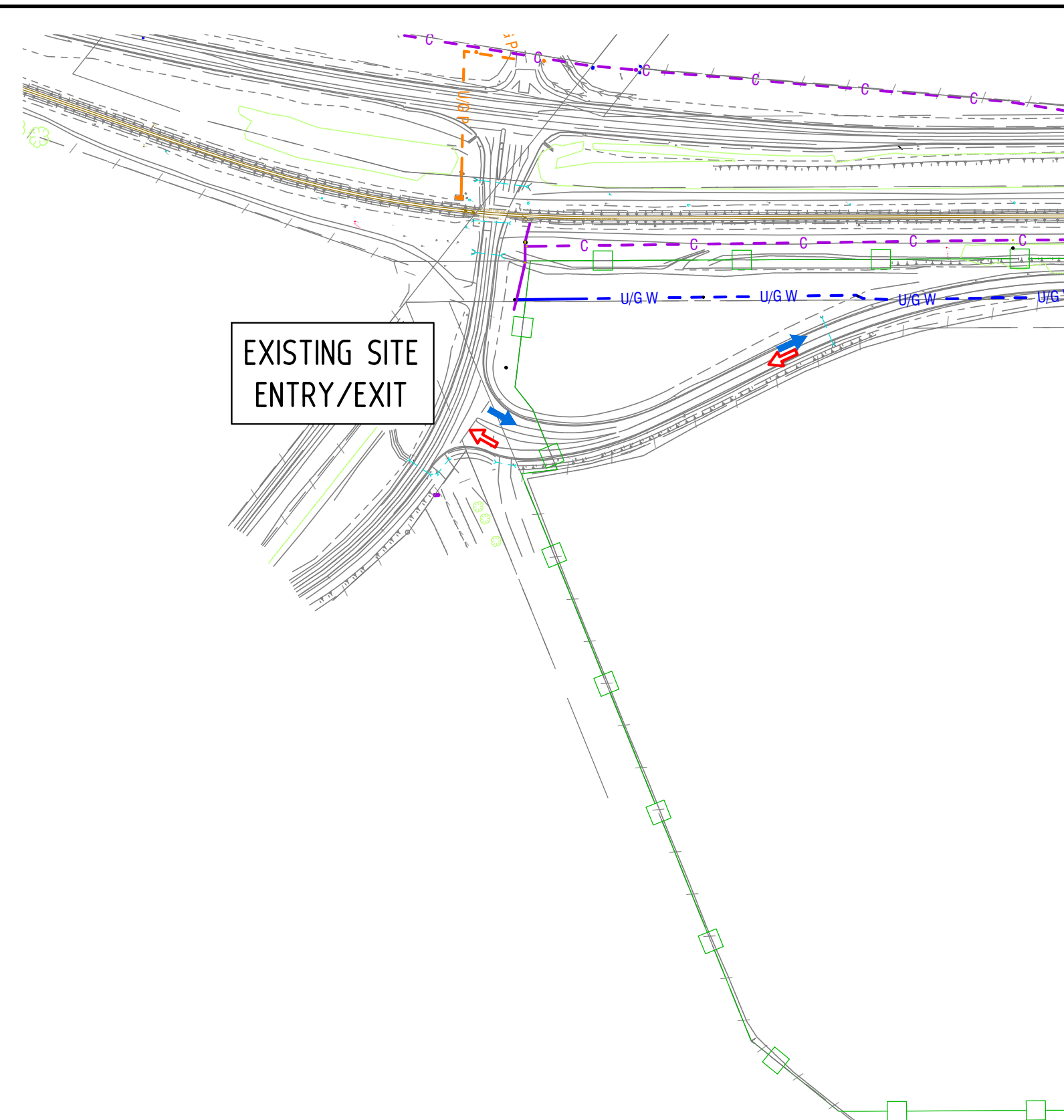
REVISIONS	BY	CHK	APP	REV	DATE

0	10/06/2020	COPIED FROM S-119, ISSUED FOR CONSTRUCTION

DRAWN	SCR	10/06/2020
CHECKED	LS	10/06/2020
ENGINEER	BC	11/06/2020
APPROVED	NH	11/06/2020

DRAWING TITLE
1.8m OPEN BULK HEAD
GENERAL ARRANGEMENT
PERSONELL ACCESS DOOR DETAIL

SITE VARIOUS	SIZE A1
PROJECT STANDARD	
DRAWING No S119-ENG-ST-DGA-0003	SHEET 9 OF 9
REV. 0	



PRELIMINARY ISSUE
DO NOT USE FOR CONSTRUCTION
 DATE 04.06.25

1:2500 @ A1

0 40 80 120 160 200 240 280



Co-operative Bulk Handling Ltd
ABN 29 256 604 947
Level 6, 240 St Georges Terrace
Perth WA 6000 Australia
GPO Box L886
Perth WA 6842 Australia
Telephone
+61 8 9237 9600
Grower Service Centre
1800 199 083
cbh.com.au

24 June 2025

Manisha Barrthakur, Chief Executive Officer
Shire of Dowerin
Via email: manisha.barthakur@dowerin.wa.gov.au

Dear Manisha,

LOT 24 ON DEPOSITED PLAN 425195 - ADDITIONS TO AN EXISTING GRAIN HANDLING & STORAGE FACILITY.

CBH is seeking development approval from the Shire of Dowerin for two open storage bulkheads at its existing grain handling and storage facility located at Lot 24 on Deposited Plan 425195, Dowerin.

As you would be aware, CBH received back-to-back harvests in FY21/22 and FY22/23 and the network was not able to cope with the increased storage demand. To mitigate this storage shortfall CBH added ~2.3 million tonnes of storage to the network across both harvest periods. Most of this temporary storage has now been converted to permanent through the development application process.

The recent FY24/25 harvest was the third largest on record with 20.3 million tonnes received and there was considerable feedback about the growing crop size taking into consideration the innovative practices of growers and accelerated conversion of hectares from sheep to cropping. Last harvest's total crop size was grossly underestimated, and thankfully the network was able to accommodate the increased crop through the retention of temporary storage to permanent following the back-to-back record harvests.

As such we are currently in the process of preparing for the event of a peak harvest in FY25/26 and preparing for larger crops sooner than originally contemplated. To address this increased demand, it is proposed to utilise open bulkhead storage that has a lower specification than permanent bulkhead storage such as a gravel or dirt basecourse serviced with Drive Over Grids (DOGs).

CBH Dowerin has been identified as one site where there is a likelihood that additional storage could be needed for the FY25/26 harvest. The concept for the proposed storage is submitted as an attachment to this development application.

I look forward to hearing from you and if there is any further information that I can provide to assist with Council's consideration of my application, please do not hesitate to contact me on 08 9216 6061 or timothy.roberts@cbh.com.au

Yours Sincerely,

A handwritten signature in blue ink, appearing to read "Timothy Roberts", with a stylized flourish underneath.

Timothy Roberts
Lead – Planning & Approvals



Co-operative Bulk Handling Ltd
ABN 29 256 604 947
Level 6, 240 St Georges Terrace
Perth WA 6000 Australia
GPO Box L886
Perth WA 6842 Australia
Telephone
+61 8 9237 9600
Grower Service Centre
1800 199 083
cbh.com.au

CONSENT TO SIGN APPLICATIONS FOR DEVELOPMENT APPROVAL AND BUILDING PERMITS FOR LAND OWNED, LEASED OR LICENSED BY CO-OPERATIVE BULK HANDLING LIMITED

This is to confirm that Co-operative Bulk Handling Limited (**CBH**) authorises each of the following CBH personnel to sign and lodge on behalf of CBH all applications for development approval and building permits (and all documents associated with those applications) in connection with land owned, leased or licensed by CBH:

1. David Paton, Chief External Relations Officer
2. Rob Dickie, Head of Government & Industry Relations
3. Kellie Todman, Manager – Government & Industry Relations.
4. Emma Haak, Lead – Planning & Approvals.
5. Timothy Roberts, – Planning & Approvals.

Should you require further information regarding any present or future applications for development approval or building permits, please do not hesitate to contact CBH Planning Approvals at PlanningApprovals@cbh.com.au.

This consent takes effect on the last date written below and from that date supersedes any and all previous consents to sign and lodge on behalf of CBH applications for development approval and / or building permits (and documents associated with those applications) in connection with land owned, leased or licensed by CBH.

Yours faithfully

Signed for and on behalf of Co-operative Bulk Handling Limited by or in the presence of:

A handwritten signature in blue ink that reads "Simon Stead".

Signature of Director

A handwritten signature in blue ink that reads "Simon Stead".

Name of Director

A handwritten signature in blue ink that reads "4.6.25".

Date of signing

A handwritten signature in blue ink that reads "Richard Lodging".

Signature of ~~Director~~ or Company Secretary

A handwritten signature in blue ink that reads "RICHARD LODGING".

Name of ~~Director~~ or Company Secretary

A handwritten signature in blue ink that reads "4.6.2025".

Date of signing